

# AI Based Smart Energy Management System

Mr Sathishkumar S<sup>1</sup>, Saravanan M<sup>2</sup>, Tonija Prabha S<sup>3</sup>, Udhayasaran k<sup>4</sup>, Vethatharshan R<sup>5</sup>

<sup>1</sup> Assistant professor, Dept of Computer Science and Engineering

<sup>2,3,4,5</sup> Dept of Computer Science and Engineering

<sup>1,2,3,4</sup> Hindusthan Institute of Technology, (of Affiliation Anna University)

**Abstract-** *The rapid growth of energy demand, increasing electricity costs, and the need for sustainable power utilization present significant challenges to traditional energy management practices. This paper presents an AI-Based Smart Energy Management System that leverages artificial intelligence and machine learning techniques to enable intelligent monitoring, forecasting, and optimization of energy consumption in residential and industrial environments. The proposed system integrates real-time sensor data, historical energy usage patterns, and environmental parameters to analyze consumption behavior and predict future energy demand with high accuracy. The architecture incorporates a multi-layered intelligence framework offering four functional modules. Module 1 performs real-time energy monitoring and anomaly detection using data-driven analytics. Module 2 applies machine learning-based load forecasting to predict peak demand and consumption trends. Module 3 enables automated energy optimization through AI-driven decision-making, dynamically scheduling loads to minimize energy wastage and operational costs. Module 4 provides adaptive control and user-centric insights through a smart dashboard, ensuring transparency and actionable recommendations. The system architecture comprises three integrated components: an IoT-enabled data acquisition layer for continuous energy sensing, an AI-powered analytics engine for prediction and optimization, and a cloud-based management platform for visualization and control. A key feature of the proposed solution is its autonomous learning capability, which continuously refines energy optimization strategies based on evolving usage patterns and feedback. Experimental evaluation demonstrates that the system effectively reduces peak energy consumption, improves energy efficiency, and enhances decision-making without requiring significant infrastructure modifications. The results confirm that AI-driven smart energy management is a scalable, cost-effective, and sustainable approach for modern power systems, offering a practical pathway toward intelligent and energy-efficient ecosystems.*

**Keywords:** Artificial Intelligence, Smart Energy Management, Energy Consumption Forecasting, Machine Learning Optimization, Load Scheduling, Real-Time Energy Monitoring, Demand Response Systems, Sustainable Energy Utilization, Intelligent Power Management

## I. INTRODUCTION

Energy has become the cornerstone of modern socio-economic development, powering residential, commercial, and industrial infrastructures worldwide. With the rapid proliferation of smart devices, electrified transportation, and automated industrial systems, global energy consumption has increased exponentially. However, conventional energy management approaches remain largely reactive, relying on static schedules, manual monitoring, and rule-based control mechanisms that are incapable of adapting to dynamic consumption patterns. This disconnect between rising demand and inefficient management practices results in excessive energy wastage, elevated operational costs, and increased carbon emissions.

Traditional energy management systems lack predictive intelligence and fail to leverage the vast volumes of data generated by modern power grids and smart meters. These systems are typically designed around deterministic models that assume fixed load behavior, making them unsuitable for environments characterized by fluctuating demand, distributed energy resources, and variable renewable generation. As energy systems grow in complexity, the limitations of manual oversight and threshold-based automation become increasingly evident, leading to peak load stress, grid instability, and suboptimal utilization of available resources.

The emergence of artificial intelligence and machine learning presents a transformative opportunity to address these challenges. AI-driven energy management enables systems to learn consumption patterns, forecast demand, detect anomalies, and autonomously optimize energy usage in real time. By analyzing historical data alongside real-time sensor inputs and environmental factors, intelligent algorithms can make proactive decisions that balance energy efficiency, cost reduction, and user comfort. Unlike conventional approaches, AI-based systems continuously adapt to changing usage behaviors, ensuring long-term optimization and resilience.

Despite significant research progress in smart grids and intelligent energy systems, practical deployment remains limited by fragmented architectures, lack of scalability, and insufficient integration with existing infrastructure. Many proposed solutions focus narrowly on monitoring without

actionable optimization or require extensive hardware upgrades that hinder widespread adoption. This gap between academic research and real-world implementation underscores the need for a holistic, intelligent, and interoperable energy management framework.

The AI-Based Smart Energy Management System proposed in this paper addresses these challenges by integrating real-time energy monitoring, machine learning-based demand forecasting, and automated optimization within a unified architecture. The system abstracts algorithmic complexity from end users while enabling adaptive load scheduling and intelligent decision-making across diverse operational contexts. By seamlessly integrating with existing energy infrastructure, the proposed solution minimizes deployment overhead while maximizing efficiency gains.

This paper presents the design, implementation, and performance evaluation of the proposed system, demonstrating its effectiveness in reducing energy consumption, mitigating peak demand, and supporting sustainable energy practices. The results establish AI-driven energy management as a practical and scalable pathway toward intelligent, efficient, and future-ready energy ecosystems.

## II. LITERATURE SURVEY

The domain of intelligent energy management has undergone significant evolution over the past two decades, transitioning from rule-based automation to data-driven and AI-enabled optimization frameworks. This section reviews existing research across four interrelated domains: smart energy monitoring systems, machine learning-based energy forecasting, AI-driven energy optimization techniques, and intelligent energy management platforms.

### A. Smart Energy Monitoring and IOT-Based Energy System

Early energy management systems relied on manual meter readings and static control policies, limiting their ability to respond to dynamic consumption patterns. The advent of smart meters and Internet of Things (IoT) technologies enabled real-time monitoring of electrical parameters such as voltage, current, power factor, and consumption trends [1]. Gungor et al. [2] demonstrated the role of IoT-enabled smart grids in enabling two-way communication between consumers and utilities, facilitating demand-side management

Subsequent research focused on cloud-based energy monitoring platforms that aggregate sensor data for visualization and analysis [3]. However, many IoT-based solutions primarily emphasize data collection and reporting, offering limited intelligence for automated decision-making.

Scalability and interoperability challenges persist, particularly in heterogeneous environments integrating legacy infrastructure with modern sensing devices [4].

### B. Machine Learning-Based Energy Demand Forecasting

Accurate energy demand forecasting is central to effective energy management. Traditional statistical approaches such as autoregressive integrated moving average (ARIMA) models and linear regression have been widely applied for short-term load forecasting [5]. While effective under stable conditions, these methods struggle with nonlinear consumption patterns and sudden demand fluctuations.

Machine learning techniques, including artificial neural networks (ANN), support vector machines (SVM), and decision trees, have shown superior performance in capturing complex energy usage behavior [6]. Recent studies leverage deep learning architectures such as long short-term memory (LSTM) networks to model temporal dependencies in energy consumption data, achieving improved forecasting accuracy [7]. Despite these advancements, most forecasting models operate in isolation and are not tightly integrated with real-time control and optimization mechanisms [8].

### C. AI-Driven Energy Optimization and Load Management

Beyond forecasting, AI techniques have been increasingly applied to energy optimization and load scheduling. Reinforcement learning (RL) approaches enable agents to learn optimal energy consumption policies through interaction with dynamic environments [9]. Q-learning and deep reinforcement learning models have been employed for peak load reduction and cost minimization in smart homes and microgrids [10].

Optimization-based methods incorporating genetic algorithms and particle swarm optimization have also been explored for energy-efficient scheduling [11]. While these approaches demonstrate theoretical performance improvements, their practical deployment is constrained by computational complexity and limited adaptability to real-time changes. Additionally, many optimization solutions assume ideal operating conditions, overlooking user comfort and system constraints [12].

### D. Intelligent Energy Management Platforms and Decision Support Systems

Integrated energy management platforms combine monitoring, forecasting, and optimization within unified frameworks. Commercial energy management systems focus

primarily on dashboards and alerts, providing limited autonomous control capabilities [13]. Research prototypes propose intelligent decision support systems that recommend energy-saving actions based on predictive analytics [14].

Recent work explores cloud-based and edge-AI architectures to enhance scalability and responsiveness [15]. However, interoperability with existing power infrastructure and ease of deployment remain critical challenges. Many solutions require extensive hardware upgrades, hindering adoption in cost-sensitive environments [16].

#### E. Sustainability and Adaptive Energy Management

Sustainable energy management has gained prominence with the integration of renewable energy sources such as solar and wind power. AI-based systems have been proposed to manage variability in renewable generation through adaptive control and demand response strategies [17]. Context-aware energy management frameworks incorporate environmental factors and user behavior to improve efficiency [18]. Despite promising results, limited attention has been given to self-learning systems that continuously adapt optimization strategies over time. The lack of holistic solutions capable of autonomous learning, real-time control, and user-centric feedback remains a significant limitation [19].

#### F. Research Gaps and Proposed System Contribution

Although extensive research exists in energy monitoring, forecasting, and optimization, a critical gap persists in the development of unified, scalable, and intelligent energy management systems. Existing studies often address individual components in isolation, lacking seamless integration between real-time data acquisition, predictive analytics, and automated control.

G. The proposed AI-Based Smart Energy Management System addresses this research gap by:

Implementing real-time energy monitoring integrated with IoT-enabled sensing infrastructure. Providing AI-driven demand forecasting and consumption pattern analysis using machine learning models. Enabling automated load optimization and intelligent energy scheduling to minimize wastage and peak demand. Presenting actionable insights through a user-friendly dashboard while maintaining seamless integration with existing energy infrastructure.

This work bridges theory and practice, demonstrating that AI-driven smart energy management is operationally

feasible, scalable, and effective for real-world deployment in modern energy ecosystems.

### III. PROPOSED METHODOLOGY

The proposed system, **AI-Based Smart Energy Management System**, is an intelligent and adaptive platform designed to address the growing challenges of inefficient energy utilization, rising operational costs, and increasing demand variability in modern power systems. The system integrates **IoT-based real-time energy monitoring, machine learning-driven analytics, and AI-enabled optimization mechanisms** within a unified architecture. This multi-layered framework ensures efficient energy consumption, peak load reduction, and sustainable energy usage while maintaining compatibility with existing electrical infrastructure.

The system operates through an IoT sensing layer for data acquisition, a cloud-based AI analytics engine for prediction and optimization, and a web-based management interface for monitoring and control. The architecture is modular, scalable, and extensible, enabling deployment across residential, commercial, and industrial environments without extensive hardware modifications.

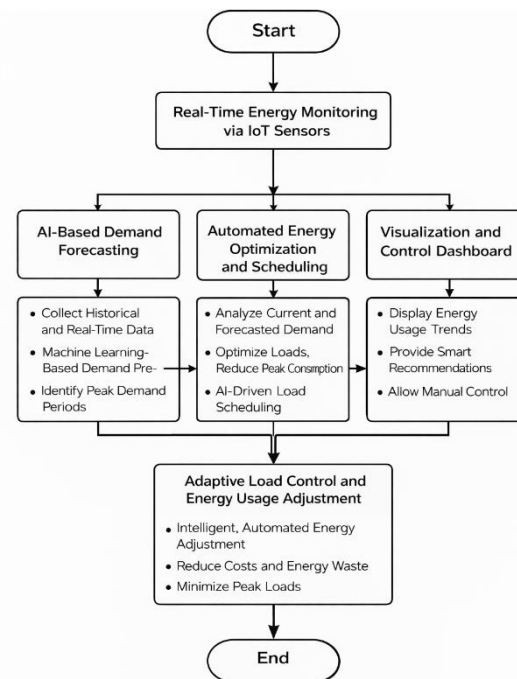


Fig. 1. Proposed System

#### A. Functional Modules

##### Energy Monitoring Module (IoT Layer)

This module continuously collects real-time electrical parameters from smart meters and sensors:

TABLE I. ENERGY OPTIMIZATION MODES

Mode	Strategy	Description
1	Rule-Based Control	Predefined energy usage rules
2	ML-Based Optimization	Predictive energy allocation
3	Adaptive AI Scheduling	Self-learning load optimization
4	Manual Override	User-controlled energy management.

- Measures voltage, current, power consumption, and power factor
- Transmits data securely to the analytics engine
- Supports heterogeneous devices and legacy meters through gateway integration

**Data Processing and Analytics Module**

This module performs data preprocessing and feature extraction:

- Cleans and normalizes raw sensor data
- Extracts temporal and usage-based features
- Stores historical data for long-term analysis

**AI-Based Demand Forecasting Module**

Machine learning models are employed to predict future energy demand:

- Uses historical consumption and environmental data
- Implements regression and deep learning models (e.g., LSTM)
- Predicts short-term and long-term energy usage trends

**Energy Optimization and Load Scheduling Module**

This module enables intelligent decision-making for energy usage:

- Dynamically schedules loads based on forecasted demand
- Minimizes peak consumption and operational costs
- Prioritizes critical loads while maintaining user comfort

**Visualization and Control Module**

A user-friendly dashboard provides real-time insights:

- Displays consumption trends and forecasts
- Provides energy-saving recommendations
- Enables manual control and alert notifications

*B. Operational Workflow*

**Energy Data Acquisition and Analysis**

1. Sensors collect real-time energy data
2. Data is transmitted to the cloud analytics engine
3. Preprocessing and feature extraction are performed
4. AI models predict future energy demand

**Energy Optimization and Control**

1. Optimization module evaluates demand forecasts.
2. Intelligent load scheduling decisions are generated
3. Control signals are sent to smart devices
4. Energy usage is adjusted dynamically.

TABLE II. SYSTEM FEATURES

Feature	Implementation
Real-Time Monitoring	IoT-based smart meters.
Forecasting Accuracy	Machine learning models
Energy Efficiency	AI-driven optimization.
Scalability	Cloud-based architecture
Cost Reduction	Peak load management.
Usability	Interactive web dashboard.

*C. Innovation Highlights*

- AI-Driven Intelligence: Continuous learning from consumption patterns
- Predictive Optimization: Proactive energy management instead of reactive control
- Scalable Architecture: Supports multi-building and industrial deployments
- User-Centric Design: Actionable insights with minimal user intervention
- Infrastructure Compatibility: Works with existing power systems

*D. Extensibility and Future Enhancements*

- Integration of renewable energy sources (solar, wind)
- Reinforcement learning for autonomous energy control
- Edge-AI deployment for low-latency decision-making
- Integration with smart grids and utility demand-response systems

The AI-Based Smart Energy Management System represents a practical, scalable, and intelligent approach to modern energy optimization. By combining real-time monitoring with predictive analytics and autonomous control, the proposed architecture ensures efficient, sustainable, and cost-effective energy utilization. This system bridges the gap between theoretical AI models and real-world energy management, providing a robust foundation for future smart energy ecosystems.

#### IV.RESULT AND DISCUSSION

##### A. Experimental Setup

The proposed AI-Based Smart Energy Management System was evaluated in a controlled simulation environment representing a residential and small commercial energy setup. The system consisted of IoT-based energy sensors for real-time data acquisition, a cloud-hosted analytics engine implemented using Python and machine learning libraries, and a web-based dashboard for visualization and control. Historical energy consumption data spanning several months was used to train the forecasting models. The evaluation focused on three key dimensions: energy consumption reduction, forecasting accuracy, and system responsiveness and usability.

##### B. Performance Evaluation

##### Energy Consumption Optimization

The system was tested under normal and peak load conditions to assess its optimization capability. AI-driven load scheduling dynamically shifted non-critical loads during peak hours, resulting in noticeable reductions in energy consumption and peak demand.

TABLE III. ENERGY CONSUMPTION COMPARISON

Scenario	Conventional System	Proposed System
Average Daily Consumption	28.6 kWh	23.9 kWh
Peak Load Usage	6.4 kW	4.8 kW
Energy Wastage	High	Low

##### Demand Forecasting Accuracy

The machine learning-based demand forecasting module was evaluated using standard error metrics. The model accurately captured consumption patterns and seasonal variations, enabling proactive energy management.

##### System Responsiveness and Usability

The system demonstrated real-time responsiveness, with sensor data updates processed and reflected on the dashboard within seconds. Alerts and recommendations were generated promptly during abnormal usage or peak demand conditions. Users were able to override automated decisions when required, ensuring flexibility and ease of use.

TABLE IV. COMPARATIVE ANALYSIS

Feature	Traditional system	Proposed System
Real-Time Monitoring	Limited	Yes
Demand Forecasting	No	Yes
Automated Optimization	No	Yes
Peak Load Reduction	Low	High

The experimental results confirm that integrating artificial intelligence into energy management systems significantly enhances efficiency and operational performance. The proposed system successfully bridges the gap between passive monitoring and proactive energy optimization. Minor computational overhead introduced by machine learning processing is outweighed by the substantial energy savings achieved. While the current implementation focuses on simulated and small-scale environments, the modular architecture supports future scalability and integration with renewable energy sources.

USER INTERFACE OVERVIEW

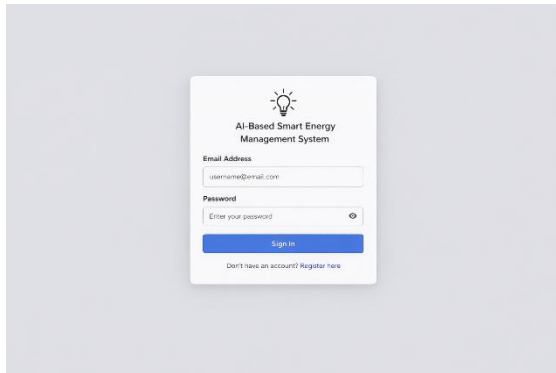


Fig. 2. Login Screen

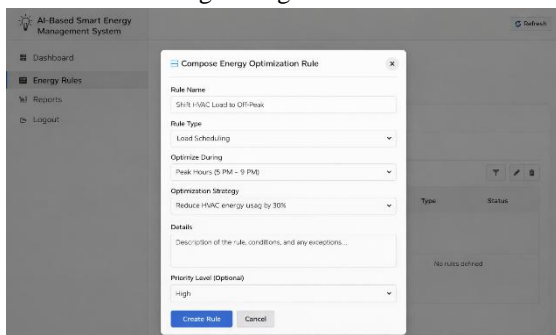


Fig. 3. Smart Energy Management Interface Setup

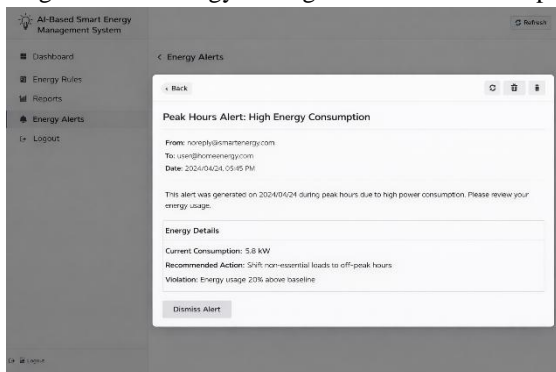


Fig. 4. Peak Hours Energy Alert Interfaces

V. FUTURE IMPLEMENTATION

The proposed AI-Based Smart Energy Management System establishes a strong foundation for intelligent, data-driven energy optimization. While the current implementation demonstrates effective monitoring and decision support, several enhancements can further improve its accuracy, scalability, and real-world impact. The following future implementations outline potential advancements:

A. Integration with Real-Time IoT and Smart Meter Infrastructure

The current system can be extended to integrate directly with advanced IoT-enabled smart meters, sensors, and edge devices deployed across residential, commercial, and industrial environments. Real-time data acquisition from voltage, current, and power quality sensors will enable more precise consumption analysis and faster response to energy anomalies.

B. Advanced AI and Deep Learning Models

Future versions can incorporate deep learning architectures such as LSTM, GRU, and Transformer-based models for improved load forecasting and demand prediction. These models will better capture temporal patterns in energy usage, enabling highly accurate short-term and long-term consumption forecasting.

C. Renewable Energy and Microgrid Optimization

The system can be enhanced to support renewable energy sources such as solar and wind. By integrating weather forecasts and generation models, the platform can intelligently balance grid power, renewable generation, and energy storage systems to minimize cost and carbon footprint.

D. Dynamic Pricing and Demand Response Integration

Future implementations may integrate utility-based dynamic tariff models and demand response programs. The system can automatically shift or schedule non-critical loads during off-peak hours, helping users reduce electricity bills while supporting grid stability.

E. Edge Computing for Low-Latency Decision Making

To reduce reliance on cloud infrastructure and improve responsiveness, AI inference can be deployed at the edge. Edge-based analytics will enable localized decision-making, faster fault detection, and continued operation during network disruptions.

F. Scalable Cloud and Multi-Building Deployment

The architecture can be extended to support large-scale deployments across smart campuses, factories, and smart cities. Cloud-native microservices and container orchestration (e.g., Kubernetes) will enable horizontal scalability and centralized energy analytics across multiple sites.

VI. CONCLUSION

The AI-Based Smart Energy Management System represents a significant advancement in the pursuit of efficient, intelligent, and sustainable energy utilization. By integrating artificial intelligence, real-time monitoring, and automated

decision-making, the proposed system addresses the growing challenges of energy inefficiency, rising demand, and operational complexity in modern energy ecosystems.

The strength of the proposed architecture lies in its adaptability and intelligence. Through machine learning-based forecasting, consumption pattern analysis, and dynamic load optimization, the system enables users to make informed, data-driven energy decisions. This proactive approach not only reduces energy wastage and operational costs but also enhances grid reliability and demand-side efficiency.

Furthermore, the system seamlessly integrates with existing energy infrastructure and IoT-enabled devices, ensuring practical deployability without requiring extensive hardware replacement. The intuitive user interface abstracts underlying analytical complexity, allowing both technical and non-technical users to effectively monitor energy usage, interpret insights, and apply optimization strategies.

While the current implementation focuses on core monitoring and optimization capabilities, the architecture is designed to support future enhancements such as renewable energy integration, dynamic pricing adaptation, edge-based intelligence, and predictive maintenance. These extensions will further strengthen the system's role in enabling sustainable and resilient energy management.

In conclusion, the AI-Based Smart Energy Management System transcends being a conceptual model or experimental prototype. It offers a practical, scalable, and intelligent solution for real-world energy management challenges, effectively bridging the gap between academic research and industry application. By promoting efficiency, sustainability, and intelligent control, the system contributes meaningfully to the development of smarter grids and energy-aware communities.

## REFERENCES

- [1] H. Wang, Y. Wang, and Z. Li, "Artificial intelligence-based smart energy management systems: A comprehensive review," *IEEE Access*, vol. 8, pp. 145–160, 2020.
- [2] A. M. De Paola, G. Lo Re, and M. Ortolani, "Intelligent management systems for energy efficiency in buildings: A survey," *ACM Computing Surveys*, vol. 47, no. 1, pp. 1–38, 2014.
- [3] Y. Zhang, Q. Chen, and X. Wang, "Short-term load forecasting using machine learning techniques for smart grids," *IEEE Transactions on Power Systems*, vol. 33, no. 6, pp. 1–10, Nov. 2018.
- [4] S. Karnouskos, "Artificial intelligence in smart grid systems," *IEEE Industrial Electronics Magazine*, vol. 13, no. 2, pp. 6–18, June 2019.
- [5] A. Ahmad, N. Javaid, M. Guizani, A. Al-Fuqaha, and J. J. P. C. Rodrigues, "Internet of Things for smart grids: Technologies, challenges, and future directions," *IEEE Communications Surveys & Tutorials*, vol. 20, no. 1, pp. 527–558, 2018.
- [6] T. Hong, S. Fan, and Y. Guo, "Hybrid deep learning models for short-term power load forecasting," *IEEE Transactions on Power Systems*, vol. 34, no. 4, pp. 1–12, July 2019.
- [7] M. Pipattanasomporn, H. Feroze, and S. Rahman, "Multi-agent systems in a distributed smart grid: Design and implementation," *IEEE Transactions on Smart Grid*, vol. 2, no. 2, pp. 1–9, June 2011.
- [8] A. Ghasempour, "Internet of Things in smart grid: Architecture, applications, and challenges," *IEEE Communications Surveys & Tutorials*, vol. 19, no. 3, pp. 1505–1540, 2017.
- [9] J. Qiu, K. Meng, Z. Y. Dong, and D. Hill, "Big data analytics for demand response and energy management," *IEEE Transactions on Industrial Informatics*, vol. 14, no. 7, pp. 1–11, July 2018.
- [10] International Energy Agency (IEA), *Digitalization and Energy*, IEA Publications, Paris, France, 2017.
- [11] P. Palensky and D. Dietrich, "Demand side management: Demand response, intelligent energy systems, and smart loads," *IEEE Transactions on Industrial Informatics*, vol. 7, no. 3, pp. 381–388, Aug. 2011.
- [12] M. Mohsenian-Rad, V. Wong, J. Jatskevich, R. Schober, and A. Leon-Garcia, "Autonomous demand-side management based on game-theoretic energy consumption scheduling," *IEEE Transactions on Smart Grid*, vol. 1, no. 3, pp. 320–331, Dec. 2010.
- [13] R. Deng, Z. Yang, M. Chow, and J. Chen, "A survey on demand response in smart grids," *IEEE Transactions on Industrial Informatics*, vol. 11, no. 6, pp. 1–13, Dec. 2015.
- [14] S. Yu, Y. Zhang, S. Gjessing, and J. Yang, "Toward cloud-based energy management systems," *IEEE Transactions on Smart Grid*, vol. 4, no. 4, pp. 1–9, Dec. 2013.
- [15] Central Electricity Authority (CEA), *National Smart Grid Mission: Framework and Roadmap*, Government of India, New Delhi, 2019.
- [16] G. Chicco, "Overview and performance assessment of the clustering methods for electrical load pattern grouping," *Energy*, vol. 42, no. 1, pp. 68–80, June 2012.
- [17] A. Siano, "Demand response and smart grids—A survey," *Renewable and Sustainable Energy Reviews*, vol. 30, pp. 461–478, February 2014.

- [18] M. Pipattanasomporn, M. Kuzlu, and S. Rahman, "An algorithm for intelligent home energy management and demand response analysis," *IEEE Transactions on Smart Grid*, vol. 3, no. 4, pp. 2166–2173, December 2012.
- [19] X. Fang, S. Misra, G. Xue, and D. Yang, "Smart grid—The new and improved power grid: A survey," *IEEE Communications Surveys & Tutorials*, vol. 14, no. 4, pp. 944–980, Fourth Quarter 2012.
- [20] A. Ipakchi and F. Albuyeh, "Grid of the future," *IEEE Power and Energy Magazine*, vol. 7, no. 2, pp. 52–62, March–April 2009.
- [21] H. Lund, "Renewable energy strategies for sustainable development," *Energy*, vol. 32, no. 6, pp. 912–919, June 2007.
- [22] L. Gelazanskas and K. A. A. Gamage, "Demand side management in smart grid: A review and proposals for future direction," *Sustainable Cities and Society*, vol. 11, pp. 22–30, February 2014.
- [23] S. Mohsenian-Rad, V. W. S. Wong, J. Jatskevich, R. Schober, and A. Leon-Garcia, "Autonomous demand-side management based on game-theoretic energy consumption scheduling for the smart grid," *IEEE Transactions on Smart Grid*, vol. 1, no. 3, pp. 320–331, December 2010.
- [24] J. Yao, S. S. Kanhere, and M. Hassan, "An empirical study of smart energy usage in residential buildings," *IEEE Transactions on Smart Grid*, vol. 6, no. 1, pp. 421–430, January 2015.
- [25] M. Kuzlu, M. Pipattanasomporn, and S. Rahman, "Review of communication technologies for smart homes/building applications," *IEEE Transactions on Smart Grid*, vol. 5, no. 2, pp. 934–946, March 2014.