

# Environmental Risk Intelligence System With Situation-Based Alert Prioritization

Kalidhas K<sup>1</sup>, Janaranjitham R<sup>2</sup>, Gopika R<sup>3</sup>, Lakshana Devi B<sup>4</sup>, Rohith R<sup>5</sup>

<sup>1</sup>Assist prof, Dept of Electronics and Communication Engineering

<sup>2,3,4,5</sup>Dept of Electronics and Communication Engineering

<sup>1,2,3,4,5</sup> Christian College of Engineering and Technology, Oddanchatram, Dindigul.

**Abstract-** Environmental hazards like extreme temperatures, fire, toxic gases, and sudden rainfall threaten safety and operations. This project introduces an Environmental Risk Intelligence System for real-time monitoring, analysis, and prioritized alerting. It integrates sensors for temperature, humidity, CO<sub>2</sub>, rainfall, and fire detection, processed by a microcontroller using threshold-based logic to assess risk levels. Upon detecting anomalies, it triggers local alerts and sends data to a cloud platform for remote dashboard visualization, storage, and notifications. Combining IoT sensors, embedded processing, and cloud connectivity, the system boosts situational awareness and risk mitigation. Ideal for smart buildings, industries, agriculture, and public spaces, it enhances safety, speeds decision-making, and advances intelligent monitoring.

**Keywords:** Environmental Monitoring, Risk Detection, IoT Sensors, Real-Time Alerts, Smart Safety.

## I. INTRODUCTION

Environmental safety has become an increasingly important concern in modern society due to the growing impact of climate change, industrialization, and urban expansion. Various environmental hazards such as sudden temperature fluctuations, fire incidents, toxic gas accumulation, and unpredictable rainfall events can create serious risks to human life, infrastructure, and natural ecosystems. Traditional monitoring methods often rely on manual observation or isolated sensing devices that do not provide continuous real-time updates or intelligent risk evaluation. As a result, many hazardous situations remain undetected until they escalate into serious emergencies. To address these challenges, advanced monitoring technologies that combine sensing, automation, and intelligent decision-making are becoming essential.

The rapid development of Internet of Things (IoT) technologies has enabled the integration of multiple environmental sensors with embedded systems and cloud-based platforms. These technologies allow environmental parameters to be measured continuously and transmitted to

remote monitoring systems for analysis and visualization. By connecting sensors with intelligent processing units, it is possible to develop systems that not only collect environmental data but also interpret the information and generate alerts when dangerous conditions are detected. Such systems play an important role in improving safety management and enabling early preventive action.

The Environmental Risk Intelligence System proposed in this project focuses on developing a smart monitoring framework capable of detecting potentially hazardous environmental conditions in real time. The system integrates multiple sensors including temperature, humidity, carbon dioxide concentration, rainfall detection, and fire detection modules. These sensors work together to provide a comprehensive understanding of the surrounding environmental conditions. The collected data are processed using a central microcontroller that evaluates the sensor readings and identifies abnormal conditions based on predefined thresholds and logical analysis.

Once the system identifies a potential environmental risk, it immediately generates alerts to notify users and authorities. These alerts can be delivered through local alarm mechanisms as well as remote monitoring dashboards connected through a cloud platform. This approach ensures that environmental hazards are detected at an early stage, allowing quick response and reducing the chances of severe damage or accidents. The ability to monitor environmental conditions remotely also improves accessibility and allows users to track system performance from different locations.

Another important advantage of intelligent environmental monitoring systems is their ability to store historical data for future analysis. By collecting and analyzing environmental data over time, it becomes possible to identify patterns, predict potential risks, and improve decision-making strategies. This capability is particularly useful in industrial environments, smart buildings, agricultural fields, and public safety zones where environmental conditions can change rapidly.

The development of smart monitoring solutions also supports the broader concept of smart cities and sustainable infrastructure. Intelligent systems that continuously observe environmental conditions help authorities maintain safer living and working environments while reducing operational risks. Automated alert mechanisms ensure that critical situations receive immediate attention without requiring constant human supervision.

In summary, the Environmental Risk Intelligence System represents an innovative approach to environmental monitoring by combining sensor technology, embedded processing, and cloud connectivity. The system aims to provide continuous observation, intelligent risk classification, and timely alerts for hazardous environmental conditions. By enabling proactive safety management and faster response to environmental threats, the proposed system contributes to the development of reliable and intelligent environmental protection solutions.

## INTERNET OF THINGS

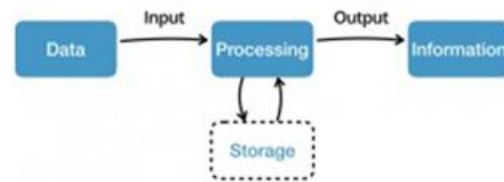
The Internet of Things (IoT) is a network of goods that include electronics, software, actuators, and connectivity, allowing these devices to connect, interact, and exchange data. The Internet of Things means extending Internet connectivity beyond standard devices such as PCs, laptops, smartphones, and tablets to a wide range of previously dumb or non-internet-enabled physical gadgets and everyday objects. These technologically implanted items can connect and interact over the Internet, and they can be remotely monitored and controlled.

The definition of the Internet of Things has changed as a result of the convergence of several technologies, including real-time analytics, machine learning, inexpensive sensors, and embedded systems. The Internet of things is made possible by embedded systems, wireless sensor networks, control systems, automation (including home and building automation), and other conventional disciplines.

## WORKING PROCESS

An Internet of Things (IoT) ecosystem is made up of web-enabled smart devices that employ embedded computers, sensors, and communication gear to gather, communicate, and act on environmental data. By connecting to an IoT gateway or other edge device, which either sends data to the cloud for analysis or analyzes it locally, IoT devices exchange the sensor data they gather. These gadgets converse with other similar devices on occasion, acting on the data they exchange. Although individuals may engage with the devices to set them

up, give them instructions, or retrieve the data, the gadgets accomplish the majority of the job without their help. These web-enabled devices' connection, networking, and communication protocols are primarily determined by the particular IoT.



**Fig: Example of an IOT system**

## ADVANTAGES

Organizations can use the internet of things to:

- monitor their overall business processes;
- improve the customer experience;
- save time and money;
- increase employee productivity;
- integrate and adapt business models;
- make better business decisions; and
- generate more revenue.

IoT pushes organizations to reconsider how they approach their enterprises, sectors, and markets, and it provides them with the means to better their business plans.

## ISSUES

The internet of things involves the usage of billions of data points and the connection of billions of devices to the internet, all of which must be protected. IoT security and privacy are important concerns due to its extended attack surface. Mirai, a botnet that hacked domain name server provider Dyn and brought down many websites for a long period of time in one of the largest distributed denial-of-service (DDoS) assaults ever witnessed, was one of the most prominent recent IoT attacks. Attackers acquired network access by exploiting inadequately protected IoT devices.

Because IoT devices are so tightly linked, a hacker only has to exploit one weakness to corrupt all of the data, rendering it useless. Manufacturers that fail to update their gadgets on a regular basis, if at all, leave them open to hackers.

Furthermore, linked gadgets frequently prompt users to provide personal information such as names, ages,

residences, phone numbers, and even social network accounts – information that hackers might exploit.

However, hackers aren't the only threat to the internet of things; IoT consumers are also concerned about their privacy. Companies that manufacture and distribute consumer IoT devices, for example, might utilize those devices to collect and sell personal data from customers. A side from exposing personal data, IoT threatens key infrastructure such as power, transportation, and financial services.

**APPLICATIONS**

The applications of the Internet of Things (IoT) are vast and diverse, as the technology can be applied to various industries and use cases. Some common applications of IoT include:

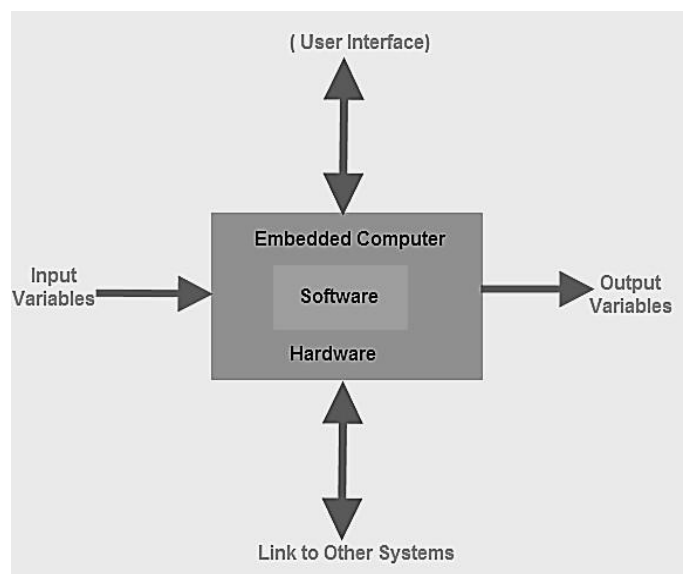
- **Smart homes:** IoT devices can be used to automate and control various home appliances and systems, such as lighting, heating, and security systems.
- **Industrial automation:** IoT can be used to optimize and automate industrial processes, such as manufacturing, logistics, and supply chain management.
- **Healthcare:** IoT devices can be used to monitor patient health and vital signs, automate medication management, and improve patient outcomes.
- **Agriculture:** IoT can be used to monitor soil moisture, temperature, and other environmental factors to optimize crop yields and reduce water usage.
- **Smart cities:** IoT can be used to optimize urban infrastructure, such as traffic management, waste management, and energy usage.
- **Transportation:** IoT can be used to optimize transportation systems, such as monitoring traffic patterns and optimizing vehicle routes.

**EMBEDDED SYSTEM**

An embedded system is one kind of a computer system mainly designed to perform several tasks like to access, process, store and also control the data in various electronics-based systems. Embedded systems are a combination of hardware and software where software is usually known as firmware that is embedded into the hardware. One of its most important characteristics of these systems is, it gives the o/p within the time limits. Embedded systems support to make the work more perfect and convenient. So, we frequently use embedded systems in simple and complex devices too. The applications of embedded systems mainly involve in our real life for several

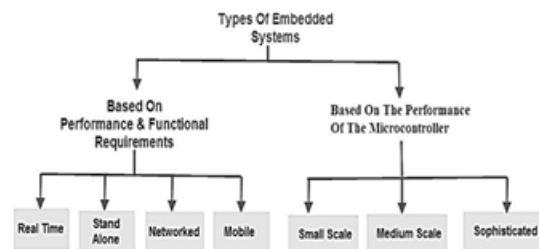
devices like microwave, calculators, TV remote control, home security and neighbourhood traffic control systems, etc.

An embedded system is integration of hardware and software; the software used in the embedded system is set of instructions which are termed as a program. The microprocessors or microcontrollers used in the hardware circuits of embedded systems are programmed to perform specific tasks by following the set of instructions. These programs are primarily written using any programming software like Proteus or Lab-view using any programming languages such as C or C++ or embedded C. Then, the program is dumped into the microprocessors or microcontrollers that are used in the embedded system circuits.



**Fig: Basic structure of embedded system**

**Embedded System Classification**



**Fig: Classification of embedded system**

Embedded systems are primarily classified into different types based on complexity of hardware & software and microcontroller (8 or 16 or 32-bit). Thus, based on the performance of the microcontroller, embedded systems are classified into three types such as:

- Small scale embedded systems
  - Medium scale embedded systems
  - Sophisticated embedded systems
- Further, based on performance and functional requirements of the system embedded system classified into four types such as: Real time embedded systems

- Standalone embedded systems
- Networked embedded systems
- Mobile embedded systems

### Embedded System Hardware

An embedded system uses a hardware platform to perform the operation. Hardware of the embedded system is assembled with a microprocessor/microcontroller. It has the elements such as input/output interfaces, memory, user interface and the display unit. Generally, an embedded system comprises of the following

- Power Supply
- Memory
- Processor
- Timers
- Output/Output circuits
- Serial communication ports
- SASC (System application specific circuits)

### Embedded System Software

The software of an embedded system is written to execute a particular function. It is normally written in a high-level setup and then compiled down to offer code that can be stuck within a non-volatile memory in the hardware.

Embedded system software is intended to keep in view of the following three limits

- Convenience of system memory
- Convenience of processor's speed
- When the embedded system runs constantly, there is a necessity to limit power dissipation for actions like run, stop and wake up.

### RTOS (Real Time Operating System)

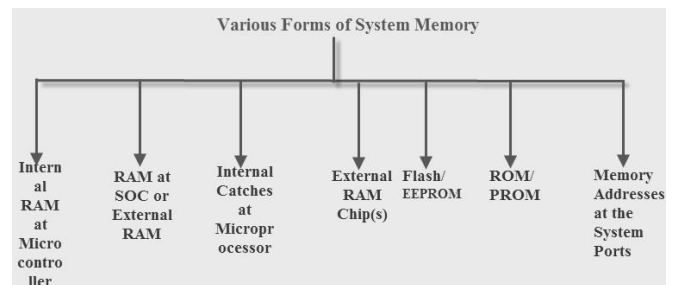
A system which is essential to finish its task and send its service on time, then only it said to be a real time operating system. RTOS controls the application software and affords a device to allow the processor run. It is responsible for

managing the different hardware resources of a personal computer and also host applications which run on the PC.

This operating system is specially designed to run various applications with an exact timing and a huge amount of consistency. Particularly, this can be significant in measurement & industrial automation systems where a delay of a program could cause a safety hazard.

### Memory and Processors

The different kinds of processors used in an embedded system include Digital Signal Processor (DSP), microprocessor, RISC processor, microcontroller, ASSP processor, ASIP processor, and ARM processor. The different types of memories of an embedded system are given in the below chart.



**Fig: Various form of system memory in embedded system**

### Embedded System Characteristics

- Generally, an embedded system executes a particular operation and does the similar continually. For instance: A pager is constantly functioning as a pager.
- All the computing systems have limitations on design metrics, but those can be especially tight. Design metric is a measure of an execution features like size, power, cost and also performance.
- It must perform fast enough and consume less power to increase battery life.
- Several embedded systems should constantly react to changes in the system and also calculate particular results in real time without any delay. For instance, a car cruise controller; it continuously displays and responds to speed & brake sensors. It must calculate acceleration/de-accelerations frequently in a limited time; a delayed computation can consequence in letdown to control the car.
- It must be based on a microcontroller or microprocessor based.

- It must require a memory, as its software generally inserts in ROM. It does not require any secondary memories in the PC.
- It must need connected peripherals to attach input & output devices.
- An Embedded system is inbuilt with hardware and software where the hardware is used for security and performance and Software is used for more flexibility and features.

### Embedded System Applications

The applications of an embedded system basics include smart cards, computer networking, satellites, telecommunications, digital consumer electronics, missiles, etc.



**Fig: Application of embedded system**

- Embedded systems in automobiles include motor control, cruise control, body safety, engine safety, robotics in an assembly line, car multimedia, car entertainment, E-com access, mobiles etc.
- Embedded systems in telecommunications include networking, mobile computing, and wireless communications, etc.
- Embedded systems in smart cards include banking, telephone and security systems.
- Embedded Systems in satellites and missiles include defense, communication, and aerospace.

### OBJECTIVES

The primary objective of the Environmental Risk Intelligence System is to design and develop a reliable monitoring framework capable of detecting and responding to hazardous environmental conditions in real time. Environmental hazards can occur suddenly and may lead to severe consequences if they are not identified and addressed at an early stage. Therefore, the system aims to provide continuous monitoring of multiple environmental parameters and generate alerts whenever abnormal conditions are

detected. Through the integration of sensors, embedded systems, and cloud connectivity, the project focuses on improving environmental safety and enhancing the efficiency of risk management.

One of the key objectives of this project is to continuously measure important environmental parameters such as temperature, humidity, carbon dioxide concentration, rainfall, and fire presence. Each of these parameters plays a significant role in determining environmental safety. For example, abnormal temperature levels can indicate potential overheating conditions or early fire development, while high concentrations of carbon dioxide may signal poor air quality or gas leakage. Rainfall detection is important for monitoring weather-related risks, and fire detection sensors help identify possible fire outbreaks in their early stages. By combining these sensors into a unified system, the project aims to create a comprehensive environmental monitoring solution.

Another major objective is to implement intelligent decision-making logic that can analyze sensor data and classify environmental conditions according to risk levels. Instead of simply displaying raw sensor readings, the system evaluates the collected data using predefined thresholds and logical analysis techniques. This allows the system to determine whether the environment is operating under normal conditions or if there is a potential hazard that requires attention. The classification of risk levels enables users to quickly understand the severity of the situation and take appropriate action.

The project also aims to provide real-time alert mechanisms that can notify users immediately when dangerous environmental conditions are detected. Early warning systems are crucial in preventing accidents and reducing damage. Therefore, the system is designed to activate local alarms such as buzzers or visual indicators whenever a critical condition occurs. In addition to local alerts, the system transmits data to a cloud platform where users can monitor environmental conditions through remote dashboards and receive notifications.

Another important objective is to enable remote monitoring and data storage through cloud integration. By storing environmental data in an online platform, users can access real-time information from any location. This feature is particularly useful for industrial facilities, public infrastructure, and smart buildings where continuous supervision may not always be possible. Cloud-based monitoring also allows historical data analysis, which can help identify long-term trends and support predictive safety strategies.

The system is also intended to be energy efficient, scalable, and adaptable for different application environments. Environmental monitoring requirements vary depending on the location and the nature of the facility. Therefore, the proposed system is designed in a flexible manner so that additional sensors or monitoring features can be integrated in the future. This adaptability ensures that the system can be used in various scenarios such as industrial safety monitoring, environmental protection projects, smart agriculture, and public infrastructure monitoring.

Overall, the objectives of this project focus on developing an intelligent environmental monitoring system that enhances safety awareness, enables proactive risk detection, and provides reliable information for decision-making. By combining sensing technologies with automated alert mechanisms and remote monitoring capabilities, the Environmental Risk Intelligence System aims to create a practical and effective solution for managing environmental hazards in modern technological environments.

## PROBLEM STATEMENT

Environmental safety is a critical concern in many sectors including industrial operations, public infrastructure, agriculture, and residential environments. Rapid changes in environmental conditions such as sudden temperature increases, gas accumulation, fire outbreaks, and unexpected rainfall events can create serious threats to human life, property, and ecological stability. In many situations, these hazards develop gradually and remain unnoticed until they reach dangerous levels. The absence of reliable monitoring systems makes it difficult to detect such conditions at an early stage, which often leads to delayed responses and increased damage.

Traditional environmental monitoring methods rely heavily on manual observation or isolated measurement instruments. These approaches are often inefficient because they require continuous human supervision and do not provide real-time updates. Manual monitoring also increases the chances of human error, especially in environments where multiple parameters must be observed simultaneously. In industrial settings, for example, hazardous gases or extreme temperature conditions may develop quickly, and delayed detection can result in equipment failure, production loss, or serious safety incidents.

Another major challenge in environmental monitoring is the lack of integrated systems capable of analyzing multiple environmental parameters together. Many existing monitoring solutions focus on a single parameter,

such as temperature or gas concentration, without considering the combined effects of different environmental factors. However, real-world environmental risks often occur due to the interaction of several parameters. For instance, high temperature combined with low humidity and the presence of flammable materials can significantly increase the likelihood of fire incidents. Without an integrated monitoring system, identifying such complex risk scenarios becomes difficult.

The absence of automated alert mechanisms also contributes to the problem. In many environments, even when monitoring devices are present, they simply display sensor readings without interpreting the data or generating alerts. This requires users to constantly monitor the system and manually determine whether the readings indicate a hazardous situation. Such an approach is not practical in large-scale environments where continuous observation is required. As a result, critical warning signs may be overlooked, allowing hazardous conditions to escalate.

Another limitation of conventional monitoring systems is the lack of remote accessibility and centralized data management. In many facilities, environmental data are stored locally or not recorded at all, which prevents long-term analysis and decision-making. Without access to historical environmental data, it becomes difficult to identify patterns, evaluate system performance, or predict potential risks. Furthermore, the inability to monitor environmental conditions remotely reduces the effectiveness of safety management strategies, especially in locations where constant human presence is not feasible.

The increasing complexity of modern infrastructures and the expansion of industrial and urban environments have made it essential to adopt intelligent monitoring solutions. There is a clear need for a system that can continuously observe multiple environmental parameters, analyze sensor data intelligently, and provide immediate alerts when hazardous conditions arise. Such a system should also support remote monitoring, data storage, and visualization to assist users in understanding environmental conditions and responding quickly to potential risks.

Therefore, the main problem addressed in this project is the lack of an integrated, intelligent, and real-time environmental monitoring system capable of detecting hazardous conditions early and providing timely alerts. The development of an Environmental Risk Intelligence System aims to overcome these limitations by combining sensor technology, embedded processing, and cloud connectivity to create a reliable solution for environmental safety management.

## II. LITERATURE SURVEY

### **IoT-based Environmental Monitoring System**

**(2025):** D. Abhiram and his research team proposed an Internet of Things (IoT)-based environmental monitoring system designed to measure and analyze environmental parameters in real time. The study highlights the increasing need for intelligent monitoring solutions capable of observing environmental conditions continuously and providing timely alerts when hazardous situations arise. Environmental pollution, climate change, and industrial expansion have increased the importance of monitoring environmental parameters such as temperature, humidity, air quality, and gas concentration.

The authors developed an IoT-enabled monitoring framework that integrates environmental sensors with microcontroller-based processing units and wireless communication technologies. The system collects environmental data from various sensors and transmits the information to cloud-based platforms for storage, analysis, and visualization. By leveraging IoT connectivity, the monitoring system enables remote access to environmental data through web interfaces and mobile applications.

A major contribution of this research is the implementation of real-time monitoring and data visualization features. The system allows users to track environmental conditions remotely, providing immediate access to sensor readings and system alerts. This capability is particularly useful for industrial facilities, smart buildings, and agricultural environments where environmental conditions must be monitored continuously.

The researchers also emphasized the importance of early detection of environmental hazards. By analyzing sensor data and comparing it with predefined threshold values, the system can generate alerts when abnormal environmental conditions are detected. These alerts allow users to take preventive actions before the situation becomes dangerous.

### **Sustainable and Green IoT Solutions for Environmental Monitoring (2024):**

**E. A. Banu** and her research team presented a study focusing on the development of sustainable and environmentally friendly Internet of Things (IoT) solutions for environmental monitoring. The research emphasizes the growing importance of implementing green technologies that support environmental protection while minimizing energy consumption and environmental impact. With increasing concerns about climate change, pollution, and ecological degradation, intelligent monitoring systems have

become essential for maintaining environmental balance and supporting sustainable development.

The authors proposed an IoT-based environmental monitoring framework that integrates low-power sensors, wireless communication technologies, and cloud-based data analysis platforms. The system is designed to monitor various environmental parameters such as air quality, temperature, humidity, and pollution levels. By collecting environmental data continuously, the system provides accurate insights into environmental conditions and helps identify potential environmental risks.

One of the key contributions of the study is the emphasis on energy-efficient system design. The researchers explored methods to reduce energy consumption in IoT devices by utilizing low-power microcontrollers and efficient communication protocols. This approach ensures that monitoring systems can operate for extended periods without frequent maintenance or power supply replacement, making them suitable for remote or outdoor deployments.

The research also highlights the role of IoT technology in promoting sustainable environmental management. By collecting real-time environmental data and transmitting it to centralized platforms, authorities and organizations can monitor environmental conditions more effectively. This information can be used to develop policies, improve environmental protection strategies, and enhance public awareness about environmental issues.

### **Future-Ready Fire Protection: Integrating IoT and Data for Enhanced Safety (2025):**

**V. Kumar** and his research team proposed an advanced fire protection system that integrates Internet of Things (IoT) technologies and data analysis techniques to enhance safety in modern infrastructures. Fire hazards remain one of the most serious threats to human safety and property, particularly in industrial environments, residential buildings, and commercial facilities. Traditional fire detection systems often rely on basic sensors and manual monitoring, which may delay the detection of fire incidents.

The authors introduced a smart fire protection framework that incorporates IoT-enabled sensors capable of detecting fire-related parameters such as temperature variations, smoke levels, and flame radiation. These sensors are connected to a centralized monitoring platform that collects and analyzes data continuously. When abnormal conditions indicating potential fire hazards are detected, the system automatically generates alerts and notifies responsible authorities.

One of the main advantages of the proposed system is its ability to provide real-time monitoring and automated response mechanisms. By using IoT communication technologies, fire detection systems can transmit alerts instantly to remote monitoring centers or mobile devices. This rapid notification capability significantly improves emergency response time and reduces the risk of large-scale damage.

The research also explores the use of data analytics to analyze historical fire-related data. By studying patterns and trends, the system can identify high-risk environments and recommend preventive safety measures. This predictive capability represents a significant improvement over traditional fire detection system.

Additionally, the study emphasizes the importance of integrating fire protection systems with broader smart building infrastructure. Smart buildings require interconnected safety systems that can coordinate responses to emergencies efficiently. IoT-based fire protection systems provide the technological framework needed for such integration.

**Smart City Environmental Monitoring Based on Internet of Things (2024):** M. A. Mohammed and his research team proposed an IoT-based environmental monitoring system designed specifically for smart city environments. Urban areas face significant environmental challenges such as air pollution, noise pollution, waste management issues, and climate-related risks. Effective monitoring systems are necessary to maintain environmental quality and ensure the safety of urban populations.

The proposed system integrates multiple environmental sensors distributed across city infrastructure to collect real-time environmental data. Sensors measure parameters such as air quality, temperature, humidity, and noise levels. The collected data are transmitted to centralized cloud servers using IoT communication networks.

One of the major contributions of the research is the implementation of a distributed monitoring architecture. Instead of relying on a single monitoring station, multiple sensor nodes are deployed throughout the city to provide comprehensive environmental coverage. This approach ensures accurate data collection and allows authorities to monitor environmental conditions across different regions of the city.

The system also includes data visualization tools that enable city administrators to analyze environmental conditions using graphical dashboards and statistical reports. These tools

help identify pollution hotspots, track environmental changes over time, and implement effective environmental policies.

Furthermore, the study highlights the importance of integrating environmental monitoring systems with other smart city technologies such as traffic management systems, waste management systems, and energy management platforms. This integration creates a unified smart city infrastructure capable of improving urban sustainability.

**Smart Energy Guard: IoT-based Monitoring and Protection (2025):** K. Ramesh and his research team presented an IoT-based monitoring and protection system called Smart Energy Guard that focuses on improving safety and reliability in electrical energy systems. Modern electrical infrastructures are highly complex and require continuous monitoring to prevent faults, energy wastage, and equipment damage. The study emphasizes that traditional energy monitoring systems often rely on manual supervision and basic protection mechanisms, which may not be sufficient to detect faults quickly or prevent hazardous conditions. Therefore, the researchers proposed a smart monitoring solution that integrates Internet of Things technology with electrical protection systems.

The proposed system uses multiple sensors to measure electrical parameters such as voltage, current, and power consumption. These sensors are connected to a microcontroller that continuously monitors energy usage and electrical performance. The collected data are transmitted through IoT communication networks to cloud-based monitoring platforms where users can access real-time system information. This connectivity allows engineers and facility managers to observe energy usage patterns and detect abnormal conditions remotely.

One of the important contributions of the research is the implementation of automated protection mechanisms. When the system detects abnormal electrical conditions such as over-voltage, over-current, or unusual power fluctuations, it automatically generates alerts and triggers safety responses. These responses may include activating warning alarms or disconnecting electrical loads to prevent equipment damage or fire hazards. This automated monitoring approach improves the reliability of electrical systems and reduces the risk of electrical accidents.

The study also discusses the importance of integrating energy monitoring systems with environmental safety monitoring. Electrical systems often operate in environments where excessive heat or environmental disturbances can lead to safety risks. By combining energy

monitoring with environmental monitoring technologies, organizations can achieve a more comprehensive safety management approach. The research concludes that IoT-based monitoring frameworks provide efficient solutions for managing energy systems and improving safety in industrial and commercial infrastructures.

### III. EXISTING SYSTEM

Environmental monitoring systems have been used for many years in various industries and research fields to observe and record environmental parameters. Traditional monitoring systems typically rely on individual sensors or standalone measurement devices designed to track specific environmental variables such as temperature, humidity, gas concentration, or rainfall levels. These systems provide basic information about environmental conditions and are often used in laboratories, weather monitoring stations, industrial facilities, and agricultural fields. Although these systems are useful for collecting environmental data, they have several limitations that reduce their effectiveness in modern safety management applications.

One of the main characteristics of existing environmental monitoring systems is that they operate independently without integrating multiple sensors into a single intelligent platform. Most traditional systems measure only one or two environmental parameters at a time. For example, a temperature monitoring device may only display temperature readings, while a gas detector focuses solely on detecting the presence of certain gases. Because these systems function separately, users must rely on multiple devices to monitor different environmental conditions. This fragmented approach makes it difficult to obtain a complete understanding of the overall environmental situation.

Another limitation of conventional monitoring systems is the absence of intelligent data processing and automated decision-making capabilities. Many existing systems simply display sensor readings on a screen or control panel without interpreting the information or identifying potential risks. In such cases, users must manually analyze the readings and determine whether they indicate a dangerous situation. This approach is not efficient in environments where conditions change rapidly or where continuous supervision is not possible. Without automated analysis, hazardous situations may remain unnoticed until they become severe.

Existing systems also tend to lack real-time remote monitoring capabilities. In many traditional setups, sensor data are stored locally within the monitoring device or displayed only on nearby control units. This restricts access to the

information and prevents users from monitoring environmental conditions from remote locations. In large industrial facilities or outdoor environments, it may not be practical for personnel to remain near monitoring devices at all times. The absence of remote access reduces the ability of decision-makers to respond quickly to environmental hazards.

Another important limitation is the lack of integrated alert mechanisms that can notify users immediately when abnormal conditions occur. Some conventional monitoring systems include simple alarm indicators such as lights or buzzers, but these alerts are often limited to local notifications. If no personnel are present near the system, the warning may go unnoticed. Additionally, many systems do not classify environmental conditions according to risk levels, which means that users may not clearly understand the severity of a detected event.

Data management and historical analysis are also weak aspects of many existing environmental monitoring solutions. Since traditional systems often store limited data or do not maintain long-term records, it becomes difficult to analyze environmental trends over time. Historical data are important for identifying patterns, predicting future risks, and improving safety planning. Without proper data storage and analysis tools, organizations cannot fully utilize the information collected by monitoring devices.

Due to these limitations, existing environmental monitoring systems do not provide the level of intelligence, integration, and responsiveness required for modern safety applications. As environmental risks become more complex and unpredictable, there is a growing demand for advanced monitoring solutions that combine multiple sensors, intelligent processing, automated alerts, and cloud connectivity.

### IV. EXISTING BLOCK DIAGRAM



Fig: Block diagram of existing system

### DISADVANTAGE.

1. **Real-Time Environmental Monitoring:** The system continuously observes multiple environmental parameters and provides immediate updates about surrounding conditions.

2. **Multi-Sensor Integration:** Several sensors such as temperature, humidity, gas, rainfall, and fire detection modules are integrated into a single system.
3. **Intelligent Risk Classification:** The system analyzes sensor data using logical algorithms to classify environmental conditions into different risk levels.
4. **Early Hazard Detection:** Potential environmental hazards are detected at an early stage, allowing preventive action before the situation becomes critical.
5. **Automated Alert Mechanisms:** The system activates alarms and warning indicators automatically when dangerous conditions are detected.
6. **Remote Monitoring Capability:** Environmental data can be accessed remotely through cloud-based dashboards and internet-connected devices.
7. **Cloud Data Storage:** Sensor data are stored on cloud platforms, enabling long-term analysis and environmental trend monitoring.
8. **Improved Safety Management:** Continuous monitoring and automated alerts help improve safety awareness and reduce accident risks.
9. **Scalable System Architecture:** Additional sensors and monitoring features can be easily integrated into the system when required.
10. **Supports Smart Infrastructure Development:** The system contributes to the development of smart buildings, smart cities, and intelligent environmental monitoring solutions.

## V. PROPOSED SYSTEM

The proposed Environmental Risk Intelligence System is designed to overcome the limitations of traditional monitoring systems by integrating multiple environmental sensors, intelligent data processing, and real-time communication technologies. The objective of the proposed system is to provide continuous monitoring of environmental conditions, identify potential hazards at an early stage, and deliver immediate alerts to users and authorities. By combining sensing technology with embedded processing and cloud connectivity, the system aims to improve environmental safety and enable proactive risk management.

The proposed system integrates several environmental sensors including temperature sensors, humidity sensors, carbon dioxide sensors, rainfall sensors, and fire detection modules. These sensors continuously monitor the surrounding environment and collect real-time data related to environmental conditions. Each sensor plays a critical role in detecting specific types of hazards. For example, temperature sensors help identify abnormal heat conditions,

carbon dioxide sensors detect poor air quality or gas accumulation, rainfall sensors monitor weather conditions, and fire detection sensors identify possible fire incidents.

All sensor readings are transmitted to a central microcontroller that acts as the main processing unit of the system. The microcontroller collects data from each sensor and processes the information using predefined threshold values and logical decision algorithms. Instead of simply displaying raw sensor data, the system analyzes the readings and determines whether the environmental conditions fall within safe limits or indicate a potential risk. This intelligent evaluation enables the system to classify environmental conditions into different risk levels such as normal, warning, or critical.

When the system detects abnormal environmental conditions, it automatically activates alert mechanisms to notify users immediately. Local alert devices such as buzzers or visual indicators are triggered to provide instant warnings in the monitoring area. In addition to local alerts, the system sends environmental data to a cloud-based platform where it can be accessed through remote monitoring dashboards. This feature allows users to observe real-time environmental conditions from any location using internet-enabled devices.

The integration of cloud technology also allows environmental data to be stored for long-term analysis. Historical data can be used to study environmental trends, identify recurring hazards, and improve safety planning strategies. This capability enhances decision-making and supports predictive risk management approaches.

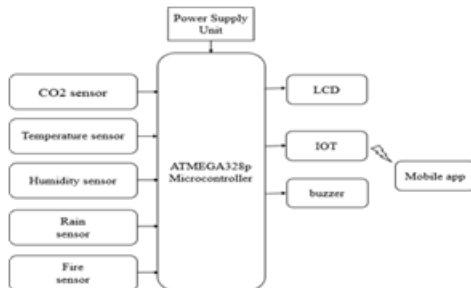
Another important feature of the proposed system is its ability to provide centralized monitoring of multiple environmental parameters. Instead of using separate monitoring devices, all sensor data are processed within a single integrated system. This improves efficiency, simplifies system management, and ensures that environmental conditions are evaluated collectively.

The proposed system is also designed with scalability and flexibility in mind. Additional sensors or monitoring features can be integrated into the system depending on the requirements of different applications. This makes the system suitable for use in various environments such as industrial facilities, smart buildings, agricultural monitoring systems, and public safety infrastructures.

By combining multi-parameter sensing, intelligent data processing, automated alert mechanisms, and cloud-based monitoring, the Environmental Risk Intelligence System

provides a modern and reliable solution for environmental hazard detection. The system enhances situational awareness, reduces response time during emergencies, and supports the development of safer and more sustainable environments.

## VI. BLOCK DIAGRAM



**Fig: Block diagram of proposed method**

### BLOCK DIAGRAM EXPLANATION

The proposed Environmental Risk Intelligence System is designed to monitor multiple environmental parameters and provide early warnings when hazardous conditions occur. The block diagram illustrates the overall architecture of the system and shows how different hardware modules interact to perform environmental monitoring, data processing, alert generation, and remote communication. The system is mainly composed of a power supply unit, several environmental sensors, an ATmega328P microcontroller, an LCD display, a buzzer alert system, an IoT communication module, and a mobile application for remote monitoring.

At the top of the block diagram is the power supply unit, which provides the necessary electrical power required for the proper operation of all system components. A stable and regulated power source is essential because sensors and microcontrollers require consistent voltage levels to function accurately. The power supply converts the input electrical power into a suitable regulated output that is distributed to the microcontroller, sensors, and other modules within the system.

Several environmental sensors are connected to the microcontroller to monitor different environmental parameters. The CO<sub>2</sub> sensor is used to measure the concentration of carbon dioxide in the surrounding air. High levels of carbon dioxide may indicate poor air quality or gas accumulation, which can be harmful to human health. The temperature sensor measures the ambient temperature of the environment and helps detect abnormal heat conditions that could lead to equipment damage or fire hazards.

The humidity sensor is responsible for measuring the moisture content present in the air. Monitoring humidity levels

is important because excessive humidity can affect equipment performance, while extremely low humidity may create unfavorable environmental conditions. The rain sensor is used to detect the presence of rainfall or water droplets in outdoor environments. This sensor is useful for weather monitoring and helps identify conditions that may affect environmental safety or infrastructure.

The fire sensor plays a critical role in detecting the presence of flames or fire-related radiation. Early fire detection is essential for preventing large-scale damage and ensuring safety. When the fire sensor detects flames or abnormal heat signatures, it immediately sends a signal to the microcontroller, allowing the system to activate warning alerts.

The processed information from the microcontroller is displayed on an LCD display module. The LCD provides real-time visualization of environmental parameters such as temperature, humidity, gas concentration, and system status. This allows users present at the monitoring location to observe environmental conditions directly and understand whether the system is operating normally.

In addition to the visual display, the system includes a buzzer module that acts as an audible alert device. When the microcontroller detects hazardous environmental conditions such as excessive gas concentration, extreme temperature, fire detection, or abnormal weather conditions, the buzzer is activated to provide an immediate warning signal. This alert helps people nearby become aware of the potential danger and take necessary safety precautions.

The central component of the proposed system is the ATmega328P microcontroller. This microcontroller acts as the main processing unit and controls the entire monitoring system. It receives data from the connected environmental sensors, processes the information, and performs logical decision-making operations. The ATmega328P is widely used in embedded systems because of its reliability, low power consumption, and ability to handle multiple input and output operations efficiently. In this system, the microcontroller continuously reads sensor values and compares them with predefined threshold limits to determine whether environmental conditions are safe or potentially hazardous.

Another important component of the proposed system is the IoT communication module. This module enables the system to transmit sensor data to an online platform or cloud server through wireless communication. By connecting the system to the Internet of Things (IoT) network,

environmental data can be accessed remotely from different locations.

The mobile application serves as the remote monitoring interface for the system. Through the mobile app, users can view real-time environmental data, receive notifications about hazardous conditions, and monitor the overall system performance. This feature allows users to supervise environmental safety even when they are not physically present at the monitoring site.

Overall, the proposed system block diagram demonstrates an integrated environmental monitoring framework that combines sensor technology, embedded processing, local alert mechanisms, and IoT-based communication. By continuously monitoring environmental parameters and providing timely alerts through both local and remote channels, the system significantly improves environmental safety, risk awareness, and decision-making capabilities.

#### ADVANTAGES

1. **Real-Time Environmental Monitoring:** The system continuously observes multiple environmental parameters and provides immediate updates about surrounding conditions.
2. **Multi-Sensor Integration:** Several sensors such as temperature, humidity, gas, rainfall, and fire detection modules are integrated into a single system.
3. **Intelligent Risk Classification:** The system analyzes sensor data using logical algorithms to classify environmental conditions into different risk levels.
4. **Early Hazard Detection:** Potential environmental hazards are detected at an early stage, allowing preventive action before the situation becomes critical.
5. **Automated Alert Mechanisms:** The system activates alarms and warning indicators automatically when dangerous conditions are detected.
6. **Remote Monitoring Capability:** Environmental data can be accessed remotely through cloud-based dashboards and internet-connected devices.
7. **Cloud Data Storage:** Sensor data are stored on cloud platforms, enabling long-term analysis and environmental trend monitoring.
8. **Improved Safety Management:** Continuous monitoring and automated alerts help improve safety awareness and reduce accident risks.
9. **Scalable System Architecture:** Additional sensors and monitoring features can be easily integrated into the system when required.

10. **Supports Smart Infrastructure Development:** The system contributes to the development of smart buildings, smart cities, and intelligent environmental monitoring solutions.

#### FLOW CHAT

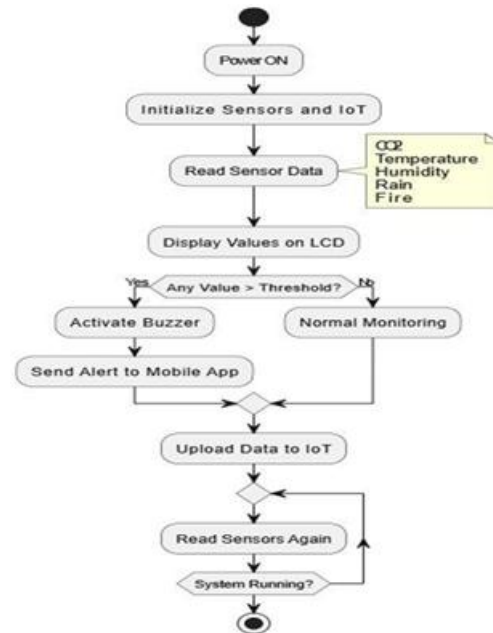


Fig: Operational Flow of the IoT Sensor Monitoring System

#### VII. RESULT

The implementation of the Environmental Risk Intelligence System demonstrates the effectiveness of integrating multiple environmental sensors with an embedded processing unit and IoT-based communication platform. The system was developed to continuously monitor key environmental parameters such as temperature, humidity, carbon dioxide concentration, rainfall presence, and fire detection. During the testing phase, the system successfully collected real-time data from all sensors and processed the information using the microcontroller-based decision logic. The collected environmental data were displayed on the LCD screen, allowing users to observe the real-time status of environmental conditions directly at the monitoring location.

Experimental evaluation of the system showed that the sensors responded accurately to environmental changes. Temperature and humidity variations were successfully detected and updated on the display interface without significant delay. Similarly, the carbon dioxide sensor effectively identified variations in air quality levels, providing useful information about potential gas accumulation in the environment. The rainfall detection module responded immediately when exposed to water droplets, confirming the

system's ability to detect weather-related environmental conditions. The fire detection sensor also demonstrated reliable performance by detecting flame sources and generating immediate alert signals.

One of the key results observed during system testing was the successful activation of alert mechanisms when environmental parameters exceeded predefined threshold values. When abnormal conditions such as excessive temperature, high gas concentration, or flame detection occurred, the microcontroller triggered the buzzer alert system to notify nearby users. This immediate alert capability ensured that potentially hazardous situations were identified quickly and that users could take necessary precautionary measures.

Another important outcome of the system implementation was the successful transmission of sensor data to the IoT-based monitoring platform. The communication module enabled the system to send environmental data to a mobile application interface, where users could remotely monitor system performance and environmental conditions. This remote monitoring capability significantly improved the accessibility of environmental information and allowed users to supervise the system from different locations.

The system also demonstrated stable performance under continuous monitoring conditions. The microcontroller was able to process multiple sensor inputs simultaneously without affecting system responsiveness. The integrated architecture ensured efficient coordination between sensors, processing units, alert mechanisms, and communication modules.

Overall, the results confirm that the Environmental Risk Intelligence System provides an effective and reliable solution for real-time environmental monitoring and hazard detection. The system successfully achieved its objective of combining sensor technology, embedded processing, and IoT connectivity to create an intelligent environmental monitoring platform. The experimental outcomes indicate that the system can be used in various environments where continuous monitoring and early detection of hazardous conditions are essential for improving safety and risk management.

## VIII. CONCLUSION

The Environmental Risk Intelligence System developed in this project presents a practical and effective approach for monitoring environmental conditions and detecting potential hazards in real time. Environmental risks such as fire outbreaks, gas accumulation, extreme temperature variations, and sudden weather changes can pose serious

threats to human safety and infrastructure. Traditional monitoring methods often lack the ability to detect these hazards quickly and efficiently. Therefore, the development of intelligent monitoring systems capable of continuous observation and automated alert generation has become increasingly important.

The proposed system successfully integrates multiple environmental sensors with an embedded microcontroller and IoT communication module to create a comprehensive environmental monitoring platform. Sensors such as temperature, humidity, carbon dioxide, rainfall, and fire detection modules continuously collect environmental data from the surrounding environment. The microcontroller processes this data and evaluates the environmental conditions using predefined threshold levels. When abnormal conditions are detected, the system generates immediate alerts through buzzer notifications and remote monitoring applications.

The implementation of IoT technology plays a significant role in improving the accessibility and functionality of the monitoring system. By transmitting sensor data to a cloud-based platform, the system enables users to remotely observe environmental conditions through mobile devices or computer interfaces. This remote monitoring capability enhances system usability and allows authorities to supervise environmental safety even when they are not physically present at the monitoring location.

Another important contribution of the proposed system is its ability to provide continuous monitoring and real-time data analysis. The integration of multiple sensors ensures that environmental conditions are evaluated comprehensively rather than relying on a single parameter. This improves the reliability of hazard detection and reduces the likelihood of overlooking potential risks.

The system also demonstrates the benefits of automated alert mechanisms in improving safety management. Immediate warning notifications allow users to take preventive actions before environmental conditions escalate into serious hazards. Early detection of risks significantly reduces the potential impact of environmental incidents and supports effective emergency response strategies.

Furthermore, the modular architecture of the proposed system allows it to be easily expanded or modified according to application requirements. Additional sensors or monitoring modules can be integrated without major changes to the system design. This flexibility makes the Environmental Risk Intelligence System suitable for various applications including industrial safety monitoring, smart buildings,

environmental research, agricultural monitoring, and smart city infrastructure.

In conclusion, the project successfully demonstrates the feasibility and effectiveness of an intelligent environmental monitoring system that combines sensor technology, embedded processing, and IoT communication. The Environmental Risk Intelligence System provides an efficient solution for real-time environmental monitoring, early hazard detection, and improved safety awareness. The system contributes to the development of advanced environmental monitoring technologies that support safer and more sustainable environments.

## IX. FUTURE ENHANCEMENT

Although the Environmental Risk Intelligence System developed in this project successfully demonstrates the capability of monitoring environmental parameters and detecting potential hazards, several improvements and enhancements can be implemented in the future to further increase system performance, reliability, and functionality. Advancements in sensing technology, data analysis techniques, and communication systems provide opportunities to expand the capabilities of intelligent environmental monitoring solutions.

One of the major areas for future enhancement is the integration of additional environmental sensors to monitor a wider range of environmental parameters. For example, sensors capable of detecting other harmful gases such as carbon monoxide, methane, or nitrogen dioxide can be incorporated into the system. Monitoring these gases would improve air quality assessment and provide better protection in industrial or urban environments where multiple pollutants may be present.

Another potential improvement is the implementation of advanced data analysis techniques such as machine learning and predictive analytics. By analyzing historical environmental data collected by the system, predictive algorithms could be developed to forecast potential environmental risks before they occur. This would allow the system to move beyond simple threshold-based detection and provide more intelligent risk prediction capabilities.

Future versions of the system could also include improved communication technologies to enhance connectivity and reliability. For example, integrating advanced wireless communication protocols such as LoRa, NB-IoT, or 5G networks could enable long-range data transmission and support monitoring in remote or large-scale environments. These technologies would allow environmental data to be

transmitted over greater distances while maintaining low power consumption.

Another important enhancement involves improving the user interface and data visualization capabilities of the monitoring platform. Advanced dashboards with graphical data representation, real-time charts, and automated reporting features could provide users with a clearer understanding of environmental conditions and system performance. Mobile applications with push notification features could also enhance user interaction and ensure that alerts are received immediately during critical situations.

Energy efficiency is another aspect that can be improved in future system designs. Integrating renewable energy sources such as solar power modules can make the monitoring system more sustainable and suitable for deployment in outdoor or remote locations. Energy-efficient design strategies can also extend the operational lifetime of the system and reduce maintenance requirements.

Additionally, the system could be integrated with automated control mechanisms to create a fully intelligent environmental management system. For example, when high temperature levels are detected, the system could automatically activate cooling or ventilation systems. Similarly, gas detection events could trigger automatic ventilation or safety shutdown procedures in industrial environments.

Security and data protection can also be enhanced in future implementations by incorporating secure communication protocols and encryption techniques. Protecting environmental data and system communication channels is important for maintaining system integrity and preventing unauthorized access.

Overall, future enhancements of the Environmental Risk Intelligence System focus on improving sensing capabilities, predictive intelligence, connectivity, energy efficiency, and system automation. These improvements will enable the system to evolve into a more advanced and intelligent environmental monitoring platform capable of supporting complex safety management applications in smart cities, industrial environments, and environmental protection systems.

## REFERENCES

- [1] D. Abhiram, K. D. Reddy, P. K. Reddy and M. Belwal, "IoT-based Environmental Monitoring System," *2025 3rd International Conference on Intelligent Data*

- Communication Technologies and Internet of Things (IDCIoT)*, Bengaluru, India, 2025, pp. 764-769, doi: 10.1109/IDCIOT64235.2025.10915186.
- [2] E. A. Banu, N. Venkateswaran, P. S. L. Mageshwari, E. M and R. K. Pandey, "Sustainable and Green IoT Solutions for Environmental Monitoring," *2024 Ninth International Conference on Science Technology Engineering and Mathematics (ICONSTEM)*, Chennai, India, 2024, pp. 1-6, doi: 10.1109/ICONSTEM60960.2024.10568826.
- [3] V. Kumar, R. K. Dwivedi and S. Prakash, "Future- Ready Fire Protection: Integrating IoT and Data for Enhanced Safety," *2025 International Conference on Artificial intelligence and Emerging Technologies (ICAIET)*, Bhubaneswar, India, 2025, pp. 1-5, doi: 10.1109/ICAIET65052.2025.11211272.
- [4] M. A. Mohammed, A. Hussian, M. A. Jawad, N. R. W. Zaydan, S. H. Ali and S. Shehab, "Smart City Environmental Monitoring Based on Internet of Things," *2024 IEEE 9th International Conference on Engineering Technologies and Applied Sciences (ICETAS)*, Bahrain, Bahrain, 2024, pp. 1-6, doi: 10.1109/ICETAS62372.2024.11120103.
- [5] K. Ramesh, S. G. Golive and M. V. S. S. Sasank, "Smart Energy Guard: IoT-based Monitoring & Protection," *2025 4th International Conference on Innovative Mechanisms for Industry Applications (ICIMIA)*, Tirupur, India, 2025, pp. 117-121, doi: 10.1109/ICIMIA67127.2025.11200844.
- [6] R. Arabelli, E. Boddepalli, M. Buradkar, N. V. S. Goriparti and M. K. Chakravarthi, "IoT-Enabled Environmental Monitoring System Using AI," *2024 International Conference on Advances in Computing, Communication and Applied Informatics (ACCAI)*, Chennai, India, 2024, pp. 1-6, doi: 10.1109/ACCAI61061.2024.10602131.
- [7] Alrefai, R. ElBanna, C. Al Ghaddaf, I. A. Abu- AlSondos, E. M. Chehaimi and I. A. Alnajjar, "The Role of IoT in Sustainable Digital Transformation: Applications and Challenges," *2024 2nd International Conference on Cyber Resilience (ICCR)*, Dubai, United Arab Emirates, 2024, pp. 1- 4, doi: 10.1109/ICCR61006.2024.10532884.
- [8] M. A. B. Rodzoan and A. Shah, "Enhancing Business Process Management (BPM) Sustainability in the Agriculture Sector through Precision Agriculture, IoT, and UAV Technologies," *2024 IEEE 9th International Conference on Engineering Technologies and Applied Sciences (ICETAS)*, Bahrain, Bahrain, 2024, pp. 1-3, doi: 10.1109/ICETAS62372.2024.11120188.
- [9] Subbiah, V. T. Maniam and N. I. Akma Katim, "Project BlueForest: IoT Sensor Applications in Mangrove Ecosystem Management – an In-Depth Pilot Study Analysis," *2024 IEEE 15th Control and System Graduate Research Colloquium (ICSGRC)*, SHAH ALAM, Malaysia, 2024, pp. 216-221, doi: 10.1109/ICSGRC62081.2024.10691055.
- [10] W. M. Khalilia, "Developing and Evaluating IoT- based Digital Farming and Environmental Security Course: AI Istiqlal University Experience," *2024 9th International Conference on Energy Efficiency and Agricultural Engineering (EE&AE)*, Ruse, Bulgaria, 2024, pp. 1-4, doi: 10.1109/EEAE60309.2024.10600595.
- [11] J. B. Johnpaul, I. Thusnavis Bella Marry, P. Thomas, S. Rithika, Vishalakshi and M. Mercy, "Microplastics Detection in Soil and Water: Leveraging IoT Technologies for Environmental Sustainability," *2024 International Conference on Computing and Intelligent Reality Technologies (ICCIRT)*, Coimbatore, India, 2024, pp. 1-7, doi: 10.1109/ICCIRT59484.2024.10922011.
- [12] M. A. Imtiaz Anik, M. D. Tayefur Rahman, A. S. Zishan, M. D. Noman Chowdhury Onkon, N. T. Rakhi and A. Shufian, "IoT-based Modular Gas Leak Detection and Protection System for Enhanced Household Safety," *2024 27th International Conference on Computer and Information Technology (ICCIT)*, Cox's Bazar, Bangladesh, 2024, pp. 915-920, doi: 10.1109/ICCIT64611.2024.11021839.
- [13] K. Lalitha, M. X. Suresh, R. Selvakumar, P. A, J. M. Sunitha and B. Meenakshi, "Sustainable Crop Protection Using IoT-Enabled Drone Spraying with Support Vector Machine Analysis," *2024 Second International Conference on Intelligent Cyber Physical Systems and Internet of Things (ICoICI)*, Coimbatore, India, 2024, pp. 412-418, doi: 10.1109/ICoICI62503.2024.10696038.