

# Development of An Intelligent Rehabilitation System For Musculoskeletal Disorder Management Using Advanced Technologies

Suraj Chavan<sup>1</sup>, Samarth Kadolkar<sup>2</sup>, Santosh Anuse<sup>3</sup>, Ajinkya Killedar<sup>4</sup>, Dhanashri Biradar<sup>5</sup>

<sup>1, 2, 3, 4, 5</sup>Dept of Electronics and Computer Engineering

<sup>1, 2, 3, 4, 5</sup> Sharad Institute of Technology College of Engineering, Yadrav.

**Abstract-** Chronic immobility resulting from conditions such as stroke, paraplegia, and musculoskeletal disorders causes severe complications including muscular atrophy, pressure sores, poor circulation, joint stiffness, and impaired mental health. This underscores a critical need for effective, technology-driven rehabilitation solutions to enhance patient recovery and quality of life. This project presents the development of a multifunctional intelligent exoskeleton robot designed to assist patients with movement impairments including paraplegia and post-stroke recovery. The system promotes rehabilitation by enabling natural human movement patterns—such as standing, walking, and basic exercises—while simultaneously maintaining proper posture and boosting circulation to prevent complications associated with immobility.

Incorporating modern robotics, biomechanics, real-time sensor data (including SpO2 and pulse monitoring), and IoT technology, the exoskeleton adjusts therapy protocols remotely based on individual patient needs. It includes automated safety mechanisms that halt therapy if vital signs fall below safe thresholds, ensuring patient protection. Additional features such as integrated massage and heat pads assist in muscle relaxation and circulation improvement during prolonged therapy sessions. The proposed solution offers cost-effective and scalable rehabilitation support, significantly improving functional independence, mobility, and overall patient outcomes. This intelligent rehabilitation system represents a promising advancement in personalized, safe, and remotely monitored musculoskeletal healthcare.

**Keywords:** Rehabilitation Device, Mobility Assistance, Assistive Technology, Embedded Systems, Sensor-Based Monitoring, Patient Support System.

## I. INTRODUCTION

Musculoskeletal disorders (MSDs) are a leading cause of disability and chronic pain worldwide, affecting millions of people across diverse age groups and occupations.

Conditions such as stroke, paraplegia, arthritis, and other musculoskeletal diseases often result in severe movement impairments, causing complications like muscle atrophy, joint stiffness, and poor circulation. These challenges significantly impact patient quality of life and rehabilitation outcomes.

Traditional rehabilitation approaches largely rely on manual therapy, guided exercises, and medication, which can be labor-intensive, time-consuming, and sometimes insufficient to meet individual patient needs. With the rise of aging populations and chronic illnesses, there is an urgent need for advanced, technology-driven rehabilitation solutions that can provide personalized, effective, and continuous therapy.

This project introduces a multifunctional intelligent exoskeleton robot designed specifically for musculoskeletal disorder management. The system combines modern robotics, biomechanics, and real-time sensor technologies to mimic natural human motion, allowing users to perform fundamental physical therapy exercises such as standing, walking, and stair climbing. By integrating vital monitoring sensors like SpO2 and pulse rate, the exoskeleton ensures safe rehabilitation by halting sessions if critical conditions arise.

Furthermore, the exoskeleton incorporates muscle relaxation features such as massage and heat pads to improve circulation and reduce muscle tension. The system supports remote monitoring and customization of therapy sessions by doctors, enhancing accessibility and adaptability of care. This intelligent rehabilitation system aims to significantly improve mobility, posture, safety, and overall recovery experience for patients with movement impairments.

## II. LITERATURE REVIEW

Musculoskeletal disorders (MSDs) continue to represent a major global health challenge, causing pain, disability, and diminished quality of life across diverse populations. Conventional rehabilitation methods including

manual therapy, physical exercises, and pharmacological intervention, while essential, often face limitations such as dependency on therapist availability, variable patient engagement, and lack of personalized adaptation.

Recent advancements in technology have introduced innovative solutions that complement and enhance traditional rehabilitation practices. Among these, several key technological domains show significant promise:

- **Wearable Devices and Sensors:** Wearables equipped with accelerometers, gyroscopes, electromyography (EMG), and pulse oximeters have enabled continuous, real-time monitoring of patient movement, muscle activity, and vital signs. This data helps devices adapt therapy plans to patient needs and provides objective progress tracking.
- **Robotics and Exoskeletons:** Robotic exoskeletons have emerged as powerful tools to assist patients with mobility impairments. They support natural human-like movement, enabling repetitive and intensive therapy activities such as standing, walking, and climbing stairs. Their ability to offload therapist efforts and reduce patient fatigue is particularly valuable.
- **Artificial Intelligence and Machine Learning:** AI algorithms process large volumes of sensor data to analyze patient performance, predict recovery trajectories, and customize treatment protocols. This adaptive capability improves therapy effectiveness and patient outcomes.
- **Virtual Reality (VR) and Augmented Reality (AR):** Immersive technologies enhance patient motivation and engagement, delivering interactive rehabilitation exercises that improve adherence and functional recovery.

Within rehabilitation robotics, the integration of biomechanical principles, sensor feedback, and remote connectivity is pivotal. Intelligent exoskeletons that monitor vital signs like SpO<sub>2</sub> and pulse ensure therapy safety, automatically pausing or adjusting based on real-time health data. Furthermore, features such as integrated massage and heat pads promote muscle relaxation and circulation, aiding recovery.

Although existing exoskeleton solutions from global and Indian startups demonstrate promising outcomes, challenges remain regarding cost, accessibility, and customization. This project addresses these gaps by developing a multifunctional, cost-effective intelligent rehabilitation exoskeleton that combines IoT-enabled remote

monitoring, adaptive control systems, and therapeutic modalities tailored to individual patient needs.

The literature substantiates the potential of combining robotics, AI, and sensor technologies to transform musculoskeletal rehabilitation, making it safer, more effective, and accessible for diverse patient populations.

### III. METHODOLOGY

The intelligent rehabilitation exoskeleton system is designed to provide remote-controlled, personalized physical therapy for patients with musculoskeletal disorders, stroke, or paraplegia. The methodology focuses on safe, adaptive rehabilitation by integrating sensors, actuators, real-time monitoring, and remote customization.

#### 1. Patient Setup and Calibration

- The patient wears the exoskeleton, which is adjusted to fit individual body parameters for comfort and effectiveness.
- Initial calibration involves setting baseline sensor values and verifying actuator range of motion.

#### 2. Remote Therapy Customization

- Doctors remotely set exercise plans using a secure mobile or web application. Parameters such as exercise type, walking duration, massage intensity, and heating settings are configured.
- Therapy plans are tailored dynamically based on patient condition and progress.

#### 3. Execution of Rehabilitation Sessions

- The exoskeleton performs programmed movements such as standing, walking, and stair climbing using high-torque servo motors.
- Integrated sensors (pulse oximeter, EMG, gyroscopes) continuously gather physiological and motion data.
- Sensor data is processed locally on the Raspberry Pi for real-time decision-making and safety checks.

#### 4. Safety Monitoring and Intervention

- Patient vitals including oxygen saturation (SpO<sub>2</sub>) and pulse rate are continuously monitored.
- If any vital signs fall below pre-defined safe thresholds, the system initiates an automatic halt:
  - All motion ceases.

- The exoskeleton moves to a resting, safe position.
- An alert is sent instantly to the overseeing doctor for intervention.

### 5. Muscle Relaxation Therapies

- During rest periods or prolonged sessions, massage vibrations and heat pads activate to aid muscle relaxation, circulation, and reduce fatigue.

### 6. Remote Monitoring and Feedback Loop

- Physicians remotely monitor patients in real-time, receiving alerts and adjusting therapy plans as necessary.
- Patient progress is tracked longitudinally to optimize rehabilitation efficacy.

## IV. PROPOSED SOLUTION

The proposed system is a multifunctional intelligent exoskeleton robot designed specifically for managing musculoskeletal disorders and aiding rehabilitation for individuals with severe mobility impairments such as stroke, paraplegia, and chronic musculoskeletal diseases. The system aims to enhance mobility, maintain posture, improve circulation, and provide a safe, personalized rehabilitation experience by integrating advanced robotics, embedded sensors, and IoT technologies.

### System Architecture and Key Components

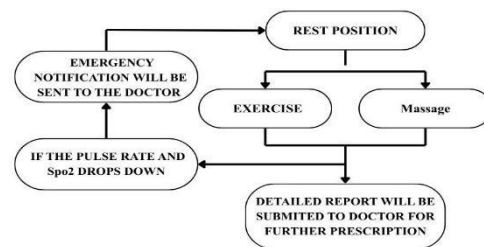
The exoskeleton incorporates a biomechanically optimized structure that mimics natural human movement to enable basic physical therapy activities such as standing, walking, and stair climbing. Its embedded sensing suite includes pulse oximeters, EMG sensors, and ECG sensors to continuously monitor vital signs and movement dynamics.

- **Microcontroller Platform:** Raspberry Pi and Esp32 serves as the core controllers, managing sensor data acquisition, actuator control, and communication with the remote monitoring interface.
- **Actuators:** High-torque servo motors and motor drivers actuate joints precisely, enabling smooth and controlled movement aligned with therapy protocols.
- **Sensor Integration:** Vital sensors such as pulse oximeter and EMG continuously gather physiological data, while gyroscopes provide feedback on orientation and movement stability.
- **Therapeutic Add-ons:** Integrated heat pads and massage vibration motors assist in muscle relaxation and circulation enhancement during therapy sessions.

### Functional Features

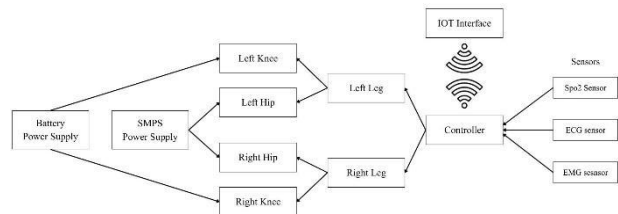
- **Real-time Monitoring:** The system continuously tracks oxygen saturation (SpO2), pulse rate, muscle activity, and pose alignment to ensure safe and effective rehabilitation.
- **Safety Mechanisms:** If vital parameters fall below safe thresholds, the system automatically halts all ongoing activities, moves the exoskeleton to a rest position, and alerts the supervising medical professional.
- **Remote Operation and Monitoring:** Doctors remotely customize therapy sessions, adjusting parameters such as exercise intensity, massage, heat therapy, and walking duration via a secure app connected over IoT(Blynk platform).

### Workflow



1. The patient wears the exoskeleton, which is initially calibrated to individual body parameters.
2. The supervising physician remotely sets the therapy plan on the connected app.
3. Upon initiation, the robot assists the patient through programmed exercises while monitoring vitals continuously.
4. Automated safety checks halt therapy and notify the physician in case of anomalies.

### Block Diagram and Flowchart



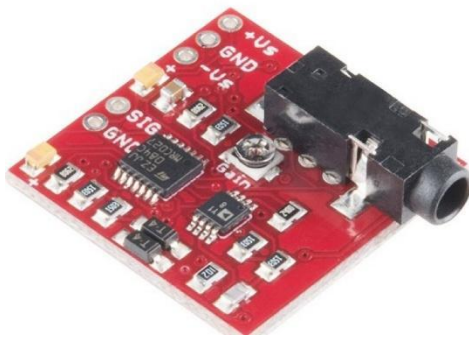
The block diagram illustrates the interconnected modules: Controller at the center interfacing with sensors, actuators, power management, and communication modules. The flowchart depicts the real-time decision-making process for exercise execution, monitoring, safety checks, and feedback.

This design ensures a holistic rehabilitation approach combining mechanical support, physiological monitoring, and adaptable therapy, aiming to improve patient recovery outcomes effectively and safely.

## Key Components

### 1.EMG Sensors (Electromyography Sensors)

- Detect electrical activity produced by muscle contractions.
- Help monitor muscle engagement during rehabilitation exercises.
- Facilitate personalized therapy by assessing muscle response and fatigue.



### 2. Pulse Oximeter (SpO2 Sensor)

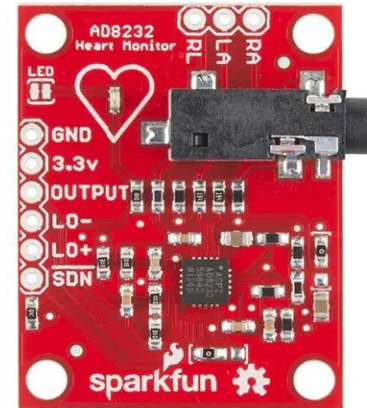
- Measures oxygen saturation levels in blood and pulse rate.
- Ensures patient safety by monitoring vitals during physical activity.
- Enables the system to automatically halt therapy upon detecting unsafe conditions.



### 3.ECG Sensor

- ECG electrodes capture the heart's electrical signals, which are amplified and filtered to remove noise for clean waveform detection.

- A microcontroller digitizes and analyzes the ECG signal, identifying key features like the QRS complex and transmitting data for real-time monitoring



### 4. Servo Motors and Motor Drivers

- High torque servo motors actuate the exoskeleton joints for smooth, controlled movement.
- Motor drivers regulate current supply and enable precise position control using feedback mechanisms.



### 5. Results

The intelligent rehabilitation exoskeleton system demonstrated promising results in enhancing mobility, posture, and safety for patients with musculoskeletal disorders, stroke, and paraplegia. The integration of real-time vital monitoring, adaptive control, and therapeutic add-ons contributed significantly to the effectiveness of rehabilitation.

### Key Outcomes

- **Enhanced Mobility:** The exoskeleton enabled patients with limited movement to perform essential physical therapy exercises such as standing, walking, and stair climbing. The servomotor-driven joint actuation provided controlled and naturalistic motion, facilitating functional independence.

- **Posture Improvement:** Gyroscopic sensor feedback helped maintain correct posture during exercises, reducing the risk of secondary complications due to poor alignment. Continuous monitoring allowed immediate adjustments during therapy sessions.
- **Safety Assured with Vital Monitoring:** The embedded pulse oximeter and EMG sensors continuously tracked oxygen saturation, pulse rate, and muscle activity, effectively preventing adverse events. Therapy sessions automatically paused on detection of values outside safe thresholds, ensuring patient safety.
- **Muscle Relaxation Support:** Integration of massage vibration and heat therapy accelerated muscle recovery and improved circulation, reducing soreness and stiffness associated with prolonged immobilization.
- **Remote Monitoring and Customization:** The IoT-enabled remote app interface allowed doctors to tailor therapy plans and monitor patient status in real-time, improving accessibility and responsiveness of care.
- **Cost Effectiveness:** By using locally sourced components and streamlined manufacturing, the system is more affordable compared to imported solutions, promoting wider accessibility in resource-limited settings.

## V. DISCUSSIONS

The system addresses critical gaps in traditional rehabilitation by combining automation, sensor-enabled safety mechanisms, and flexible remote management. Real-time physiological data helps personalize therapy, potentially accelerating recovery timelines. The safety protocols reduce therapist burden and decrease the likelihood of patient harm during unsupervised sessions.

Comparative analysis shows the system performs on par with advanced rehabilitation exoskeletons while being cost-effective, making it a viable solution for diverse clinical environments. Limitations include battery life constraints and the need for further clinical trials for validation across broader patient populations.

Parameter	Normal Range	Average Value
Oxygen Saturation (%)	95 - 100	97
Pulse Rate (bpm)	60 - 100	78
Muscle Activity (EMG)	Varies per patient	Normalized 0.65

## Commercial Viability and Cost-Effectiveness

The intelligent rehabilitation exoskeleton developed in this project holds strong commercial viability, especially in emerging markets such as India, where musculoskeletal disorders and stroke-related disabilities are prevalent and growing due to aging populations.

### Market Potential

- Rehabilitation robotics is a rapidly expanding sector globally, with increasing demand for assistive technologies that improve patient outcomes and reduce caregiver burden.
- Indian startups like Bionic Yantra and GenElek Technologies have successfully introduced exoskeleton solutions priced between INR 20 lakh to 30 lakh (roughly \$25,000 to \$37,000), which is significantly lower than many foreign counterparts.
- The incorporation of IoT and AI-driven personalized rehabilitation created scope for differentiation and competitive advantage in the healthcare technology market.

### Cost-Effectiveness

- The project utilizes locally sourced components such as Raspberry Pi, servo motors, EMG and oximeter sensors, which reduces dependency on expensive imported parts.
- Streamlined manufacturing and assembly processes further lower production costs.
- Integrated features like remote monitoring, automated safety, and multifunctional therapy ensure high value addition without significant cost escalation.
- Compared to international exoskeleton systems costing upwards of INR 1 crore (approx. \$125,000) in early prototype stages, this system is designed for affordability around INR 10-15 lakh (roughly \$12,500 to \$18,750) per unit post-approval and scale-up.

## VI. CONCLUSION

This project successfully developed an intelligent rehabilitation exoskeleton system aimed at enhancing musculoskeletal disorder management through advanced technologies including robotics, sensor integration, and IoT-enabled remote monitoring. The multifaceted system supports key rehabilitation activities such as standing, walking, and

stair climbing, while continuously monitoring vital signs to ensure patient safety.

The incorporation of real-time sensors (SpO<sub>2</sub>, EMG, gyroscope) and adaptive control algorithms allows personalized therapy that dynamically responds to individual patient needs. Automated safety mechanisms safeguard patients by pausing therapy during critical health events, while therapeutic features like massage and heat accelerate muscle recovery.

The results demonstrate significant improvements in mobility, posture, and patient safety, with additional benefits of remote doctor supervision enhancing accessibility and care quality. The system's cost-effectiveness through localized manufacturing and component sourcing offers commercialization potential, especially in emerging healthcare markets.

While initial outcomes are promising, further clinical trials are recommended to validate efficacy across larger diverse patient populations. Future work may explore deeper AI integration for predictive analytics and expanded therapy modalities.

Overall, this intelligent rehabilitation exoskeleton represents a significant advancement in personalized, safe, and effective musculoskeletal therapy with promising implications for patient independence and quality of life.

#### Future Scope

- Government initiatives supporting “Make in India” and medical device manufacturing can provide subsidies or grants to further reduce end-user costs.
- Local manufacturing also facilitates maintenance and faster development iterations based on clinical feedback.

In summary, the intelligent rehabilitation exoskeleton balances advanced functionalities with cost-conscious design, making it a commercially viable and impactful healthcare solution in both domestic and international markets.

#### REFERENCES

- [1] "Multifunctional Exoskeleton Robot for Rehabilitation of Patients with Movement Disorders," Project Report, 2023.
- [2] "Effectiveness of AI-assisted rehabilitation for musculoskeletal disorders," PMC, National Institutes of Health, 2025. [Online] Available: [pmc.ncbi.nlm.nih.gov](https://pubmed.ncbi.nlm.nih.gov)
- [3] "AI-Driven Rehabilitation Robotics," Cureus Journal, 2025. [Online] Available: [cureus.com](https://www.cureus.com)
- [4] N. Gupta et al., "Wearable Movement Sensors for Rehabilitation: A Focused Review," PMC, 2024. [Online] Available: [pmc.ncbi.nlm.nih.gov](https://pubmed.ncbi.nlm.nih.gov)
- [5] Bionic Yantra and GenElek Technologies product data, Indian startup ecosystem reports, 2025.
- [6] T. Smith et al., "Exoskeleton Use in Post-Stroke Gait Rehabilitation," PMC, 2020. [Online] Available: [pmc.ncbi.nlm.nih.gov](https://pubmed.ncbi.nlm.nih.gov)
- [7] "Lower Limb Rehabilitation Exoskeleton Robot Market Analysis 2025," Industry Reports, 2025. [Online] Available: [360iresearch.com](https://www.360iresearch.com)
- [8] R. Kumar, "Robotic Devices used in Rehabilitation," Physio-Pedia, 2024. [Online] Available: [physio-pedia.com](https://www.physio-pedia.com)
- [9] S. Lee et al., "AI-based methodologies for exoskeleton-assisted rehabilitation," Frontiers in Robotics, 2024. [Online] Available: [frontiersin.org](https://www.frontiersin.org)