

Donate Orphanage Application

Sathish Kumar S¹, Santhosh R², Mushraf Ali M³

^{1,2,3} Dept of Computer Science Engineering

^{1,2,3} Dhanalakshmi College Of Engineering

Abstract- All around the world, every minute two children become orphans. In Asia alone, there may be 65 million orphans. They are hungry, afraid and lonely. Their main issues are lack of food and clothes for their daily usage and lack of education and money. Hence, some people who wished to donate can't able to do it because of some circumstances, reasons or during pandemic situations. Here, we are introducing an android application that will defeat these issues in an easier manner as well as quickly without spending more time. The notion of this project is to support the orphans in contributing the children foods, clothes and money to the orphanages. This project will be beneficial for needy.

Keywords- Donor, Orphanage, Admin.

I. INTRODUCTION

Every year almost 100 million kids and adults are made orphans. The main purpose of this android application is to donating food, clothes and money to the orphans. By this, the end-users('Donor' and 'Orphanageadmin') are given multiple options to help the orphans, for which the users are asked to log in using their mail id for unique authentication.

II. EXISTING SYSTEM

In the old process of donation, Donor have undergone some manual process, it increases the delay and time-consuming. Because of such a lengthy process many willing people will also lose their interest. In the later period government of India taken some initiative to help the orphans and introduced a website named 'Domicile Lumpstash application' is a statutory body of the Ministry of Women & Child Development, Government of India. Website named 'Domicile Lumpstash application' gives the details of the agency which was government approved. By selecting the region, the Donor will get the details of the nearby government-approved organizations. But the drawback of this paper is that there is no option for donating online. So, it disappoints the Donor who is willing to donate online. Later this website is developed into an android application "Give Orphanage" which was a private application and developed version of this website. It provides the bank details and online payment methods, but the drawback of this application is it gives details of the only particular orphanage (i.e., the

orphanages that are only included by the developer of that application). In a later period, many applications were developed but not in India.

III. PROPOSED SYSTEM

Motive of our paper is to eliminate the drawback of previous application and to help orphans to the full extent. For this, we are going to develop an android application using the Android studio. The initial step of the application will be login. It has two ways of login one is DONOR login and other is ORPHANAGE login which means the admin of the particular orphanage. Hence, it is user friendly application and it is open source for all donors and orphanages to satisfy their wishes and needs respectively. In donor login, they can be able to find nearby orphanages and able to donate what they wish and able to view their previous donations and able to view their previous transactions. In case of admin login, they can view donors list and able to provide feedback for donor's transaction and able to view fund details and able to update events in orphanage.

IV. ADVANTAGES

- Food, clothes, education and shelter for the unfortunate children.
- Quick contact with Donors each and every day.
- Donation will be efficient & time consuming.
- Easy tracking of needy.

V. HARDWARE REQUIREMENTS & SOFTWARE REQUIREMENTS

- RAM 8GB
- PROCESSOR Intel core
- HARD DISK 100GB
- IDE ANDROID STUDIO 4.1.2
- PLATFORM WINDOWS 10
- FRONT END XML
- BACK END JAVA, MySQL, PHP
- SERVER 000WebHost

VI. THEORY OF MODULES

1) LOGIN

DONOR LOGIN- Donors can get access for donations by using this login button. ORPHANAGE LOGIN- Orphanage person can get access by using this login button.

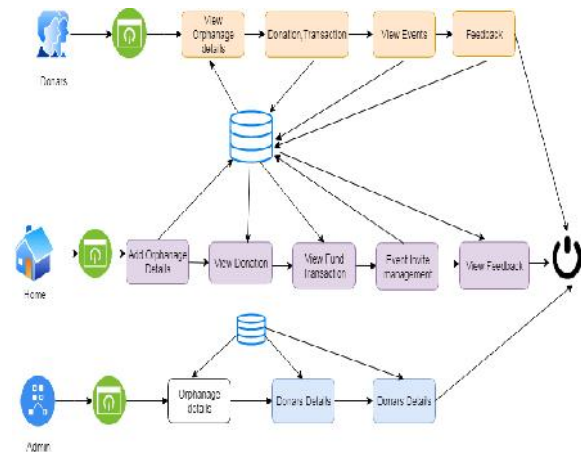
2) ORPHANAGE HOME PAGE – DASHBOURD

ABOUT US- This button includes details about DO application. ADD DETAILS- This button includes area to add details about orphanage like orphanage name, description, address, branch, account number, IFSC code, bank name, branch, strength. VIEW DONORS- This button includes area to check the details of donors who are all donated to that orphanage. FUND DETAILS- This button includes area to check the details of the fund that are donated by donors with specific information. FEEDBACK- This button includes area of feedback of donors about their donation to that particular orphanage. EVENTS- This button includes the area about the events that are to be updated from orphanage. LOGOUT- By clicking this button, the orphanage admin can logout from orphanage home page.

3)DONOR HOME PAGE – DASHBOURD

ABOUT US- This button includes details about DO application. ORPHANAGE DETAILS-This button includes area to find orphanages and orphanage details and to send message to orphanage about donation.DONATION LIST- This button includes about orphanage names which includes donations that are done by donor to orphanages. TRANSACTION LIST- This button includes the transactions that are done by donors to orphanages.FEEDBACK- This button includes the area that has feedback from orphanages to donor for donation. EVENTS- This button includes events that are updated by orphanages. LOGOUT- By clicking this button, the donor can logout from donor home page.

VII. ARCHITECTURE



VIII. DATA FLOW DIAGRAM

1)Definition:

A Data Flow Diagram (DFD) is a graphical tool used to describe and analyze the movement of data through the system. It is a graphical representation of the “flow” of data through a computer system or a data or it looks at how data flows through a system. These are central tools and basic from which the other components are developed. The development of DFD is done at several levels. The flow diagram describes the boxes that describe computations, decisions, interactions & loops. It is important to keep in mind that the flow diagrams are not flowcharts and should not include control elements.

2)Characteristics

- Information and/or data flow is represented by a labeled arrow
- Processes (transformations) are represented by labeled circles (bubbles)
- Information sources and sinks are represented by boxes
- Files and depositories are represented by a rounded rectangle or a double line.

3) DFD SYMBOLS

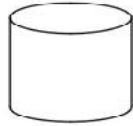
- **Process**

A process transforms incoming data flow into outsourcing data flow



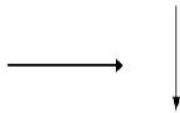
• **Datastore**

Data sources are repositories of data in the system. They are sometimes also referred to as files.



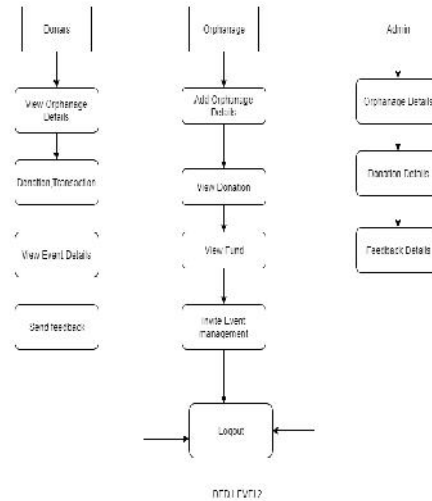
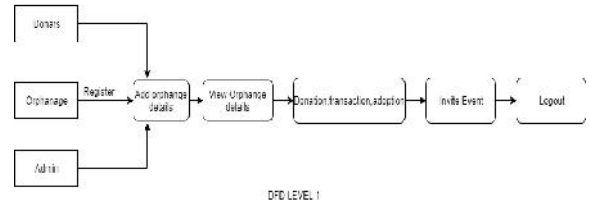
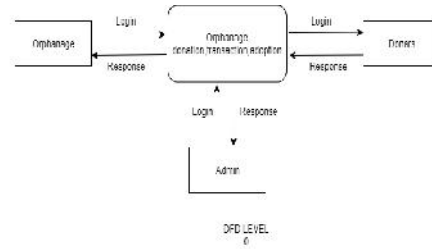
• **Data flow**

Data flows are pipelines through which packets of information flow. Label the arrows with the name of the data that moves through it.



• **External Entity**

External entities are objects outside the system, with which the system communicates.



IX. CONCLUSION

Hence, we conclude that we are raising our hands in helping orphans by creating this application and also, we hope you (donors & orphanages) will get benefits by using our application to donate food, cloths and fund with your kindness in helping orphans in all situations.

X. ACKNOWLEDGEMENT

We express the heartfelt and sincere thanks to our honorable Founder and Chairman Dr. V.P.RAMAMURTHI, Ph.D., DHANALAKSHMI COLLEGE OF ENGINEERING, for guiding us and permitting us to do our project by our own. We express our sincere and heartfelt gratitude and wish to thank our beloved Principal, Dr. V. KRISHNAKUMAR, M.Tech., Ph.D., for his support and guidance.

We extend our gratitude and heartfelt thanks to the beloved Head of the Department, Dr. S.

SIVASUBRAMANIAN, M.Tech., Ph.D., for guiding us in all aspects of our project in each stage and providing us with valuable suggestions.

We would like to thank at most to our Project Supervisor Mr. A.SULTAN SALEEM, M.E., who rendered valuable guidance and support always.

We owe our deep sense of gratitude to our Project Coordinator Ms. P.GEETHA, M.E., Assistant Professor who rendered valuable guidance and support throughout the project.

REFERENCES

- [1] ANGGY PRADIFTHA JUNFITHRANA, EUIS LIANI, MIRAZ Z. SUWONO, DIKA MELDIANA, ADE SURYANA, "Rice Donation System in Orphanage Based on Internet of Things, Raspberry-Pi, and Blockchain", ICCED, 21-22 Feb. 2019.
- [2] Food-wastage:-<http://thecsrjournal.in/food-wastage-in-India-a-serious-concern/>
- [3] MUTHUSELVAN S, SRIVIDHYA E, MIRUTHULA S R, ABDUL SAMAD S "Location Based Orphanage Finder Application for Google Android Phones", International Journal of Pure and Applied Mathematics, Volume 119 No. 16 2018, 2009-2015
- [4] SWATI JADHAV, KRUTI LAKHANI, "Food Wastage Reduction through Donation using Modern Technological Approach: Helping Hands", Volume 5, Issue 4, April 2016 [6]. Website: <http://cara.nic.in/>