

Web Portal Automation Using RPA

Mr.SureshKumar¹, Ashwathy.G², Anu Martin³, Bangaru Prasanna.s⁴, Boobalan.k⁵

¹Assistant Professor, Dept of computer science engineering

^{2, 3, 4, 5}Dept of computer science engineering

^{1, 2, 3, 4, 5} KGiSL Institute of Technology, Coimbatore, India

Abstract- UiPath is a main tool in RPA to implement RPA process. Now-a-days there are many easy ways to solve hard problems. For an Educational Institution we need to record all students marks. The whole process is done manually. For this we have created a Web Portal Automation by which they can upload the students marks automatically.

It will be helpful for staffs and other members because it is done quickly and easily.

Keywords: RPA, online mark update, faculty student presentation.

I. INTRODUCTION

The Web Portal Automation is a Robotic Process Automation (RPA) Project. Robotic process automation (RPA) is the use of software with artificial intelligence (AI) and machine learning capabilities to handle high-volume, repeatable tasks that previously required humans to perform. These tasks can include queries, calculations and maintenance of records and transactions. Technological advancements and improvements around artificial intelligence technologies are making it easier for businesses to take advantage of the benefits of RPA without dedicating a large budget for development work.

II. LITERATURE SURVEY

A literature review is a text of a scholarly paper, which includes the current knowledge including substantive findings, as well as theoretical and methodological contributions to a particular topic. Literature reviews are secondary sources, and do not report new or original experimental work. In Robotic Process Automation (RPA) is the use of software with capabilities to handle high-volume, repeatable tasks that previously required a human to perform. It aims to use a computer to manipulate existing application software in the same way that a person works with those systems and the presentation layer to perform a specific task. This technology increases the productivity for human employees who no longer are tasked with boring work.

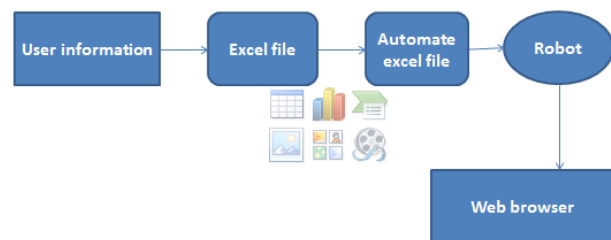
In proposed system we created an automated bot to enter the students marks what they have scored in all academics the main reason for doing this is to save time for faculty members .

DATA FLOW DIAGRAM LEVEL 0



Data flow diagram is the 2-D diagram that explains how data is processed and transferred in a browser. The graphical depiction defines each source of data and how it interacts with the other sources to reach common output.

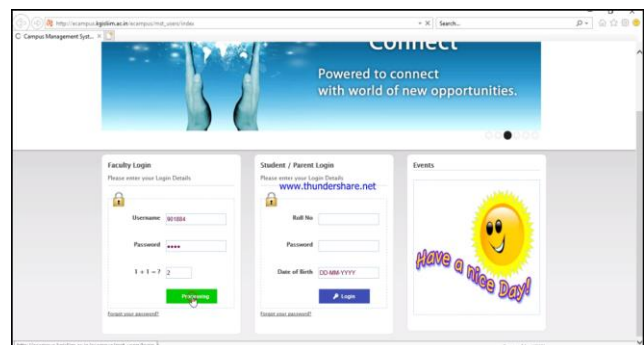
DATA FLOW DIAGRAM LEVEL 1



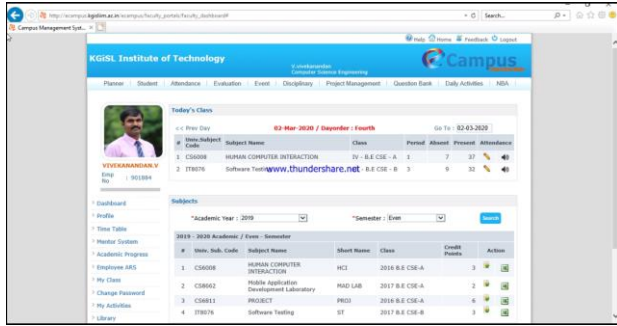
In the DFD level 1, This Excel sheet contains the details of students marks, which is to be uploaded in e-campus. The students marks will be automatically updated into the web portal. The robot does the operations instructed by the user.

III. OUTPUT AND RESULTS

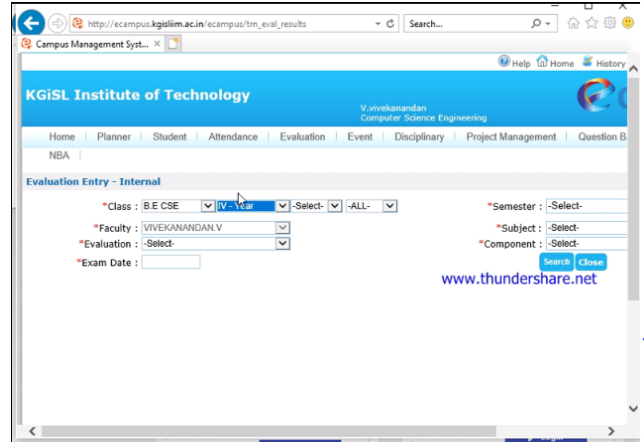
Level 1



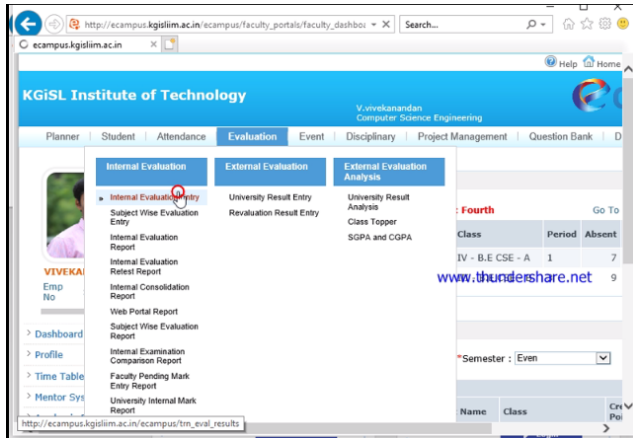
Level 2



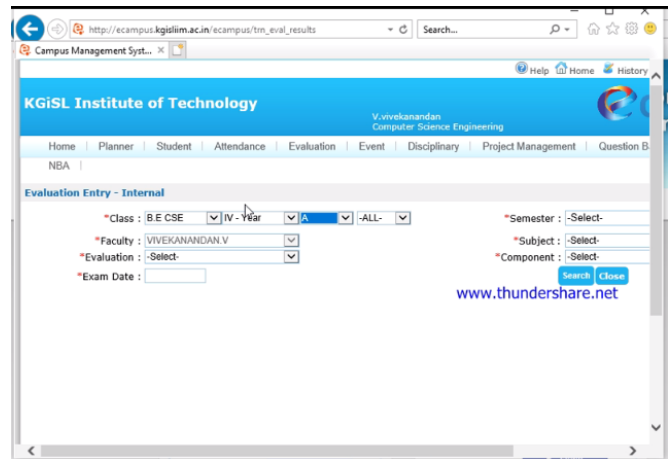
Level 5



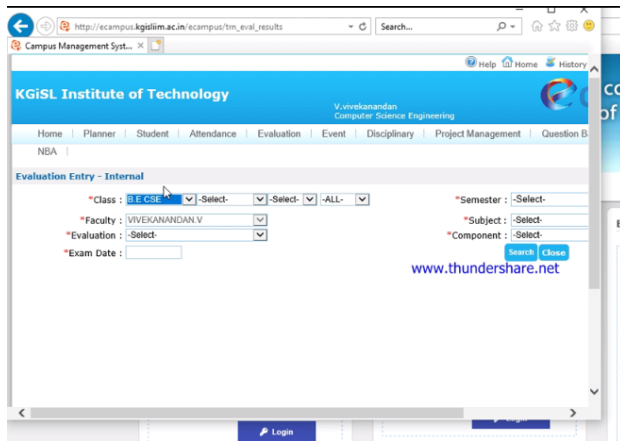
Level 3



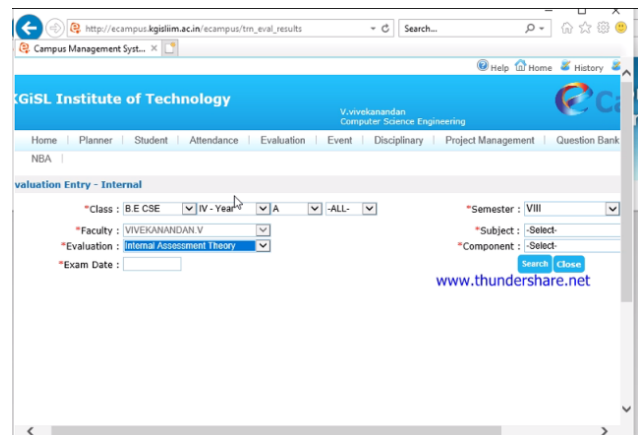
Level 6



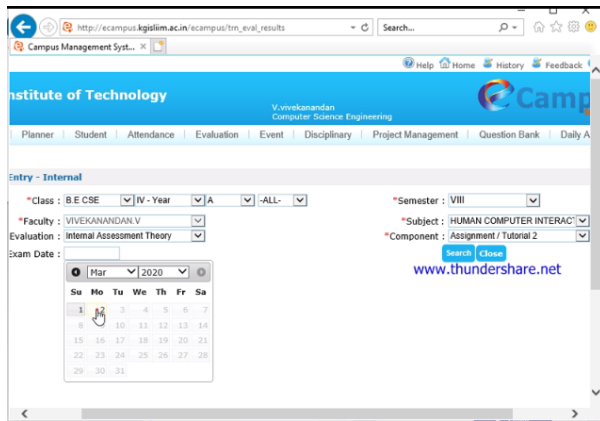
Level 4



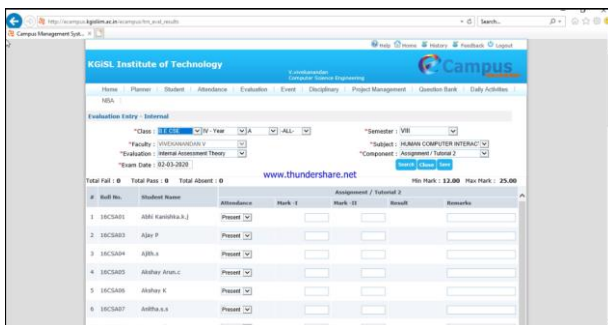
Level 7



Level 8



Level 9



IV. CONCLUSION AND FUTURE ENHANCEMENT

In web portal automation we uploaded students mark based on students performance once the faculty verified the students mark the upload in their respective module. Once the students mark is updated in the module it automatically sends to all the students and the respective HOD.

By using this we can save faculty time and we can maintain proper documents. No human intervention required.

The web portal automation for updating student's marks in particular web portal by using the UiPath tool with the respective packages. We also implement the process by the server and database maintained by the corresponding college's site on the particular web browser. In case of students with the advanced process message need to be sent to their respective mail. But the UiPath message service access is not yet enable in India. The email automation be enabled the normal message service is not enable in UiPath.

REFERENCES

- [1] Google
- [2] Wikipedia

- [3] <http://academy.uipath.in/referred> to get basic knowledge of UiPath .
- [4] <https://www.linkedin.com/pulse/robotic-process-automation-rpa-introduction-beginners-kapil-kathuria> - to know about RPA its future implementations.
- [5] https://static1.squarespace.com/static/567bb0614bf118911ff0bedb/t/58aea4f8ebd1a4c4b9a2ac8/1487840511473/RPA_The_Automation_of_Automation.pdfsample RPA project documentation.
- [6] <https://www.workfusion.com/rpaexpress-faq> -Referred to work in each and every icons of UiPath tool.
- [7] Robotic Process Automation at Exchanging -Professor Leslie Will cocks.
- [8] Robotic Process Automation Case Studies - London School of Economics