

Hybrid Renewable Energy System

Mrs. R.Rajalakshmi¹

Department of Science & Humanities
C.K. College of Engineering & Technology, Cuddalore

Abstract- *Ttransfer of the center as of size age group to dispersed age group is an recognized worldwide tendency in the authority division. supplementary, the form of dispersed generations is uneven from reliance on relic fuels to renewable sources. These sources are irregular in natural world and their generation prototype does not rivalry the weight prototype there by creating a need for a sequence storage system. In this background, energy organization presents itself as predictable tackle in in repair a scheme linked dispersed renewable sources. The confront is owing to factor such since intermittency of source, time of the day prices, sizing of planetary panel, windmills and series, limits of charge and free rates of the series. To speak to these, a plan for power organization of network linked solar panel and windmill with battery storage is been prospect. The entity is to create an energy budget will lead to poise sheet, which calculates your energy spending next to generate means to decrease our energy bill. The indict organizer of series uses this algorithm for creation choice on charge or discharging of the series or custody it in inactive form The obtain consequences show effectual investments on electrical energy bill journal. The best assortment of figure of solar panel, windmills and series size is been available*

to meet the be adamant all through the distant above the earth system price, it will be obliging to meet the weight as a consequence present is an add to in the investments on journal invoice.

Achieving the precise forecast of solar power though is very hard owing to its unsure and irregular nature. power organization plan for storm power scheme is been obtainable. Here the series is being utilize in arrange to decrease the fluctuations on network that are cause due to storm power change scheme. By utilize the series in network linked storm power system, the production so as to is been full to the weight is maintain steady still beneath the abridged storm authority production. storm power is being second-hand throughout the lack of astral power and vice-versa. This help to put into practice an effectual power organization scheme.

Thus, by utilize together solar and storm power source, an well-organized power financial plan is achieve which lead to a equilibrium piece which calculate your power spending next to generate income to decrease power invoice

The future scheme helps in efficiently derive the possible reimbursement of grid-connected astral board and windmill scheme with series storage space

I. INTRODUCTION

With the rising tendency in the price of relic fuel balancing with the lessening trend in the dispersed age group technology, electrical energy customers are slowly uneven towards being electrical energy prosumers. In adding, a number of administration subsidy are hopeful the clientele to have their possess renewable power age group. Rooftop solar now days became more popular because it does not require a separate land space or area. It is flexible to install on the roof of the house or profitable many-sided. A rooftop solar unaccompanied cannot give good cause for the reduce in electrical energy invoice as the solar irradiation is obtainable barely throughout day. Solar panels installed the distance end to end of by means of a series storage space in arrange to get a improved decrease in electrical energy invoice. This series will help to meet the weight throughout the lack of solar authority. In addition, if the battery is charged and is available

II. BLOCK DIAGRAM AND DESCRIPTION

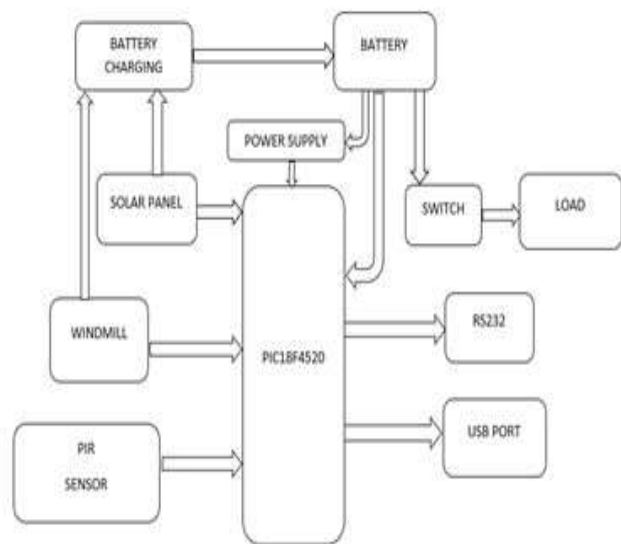


Fig:1 Block diagram

1. SOLAR PANEL

Solar board refers to a board intended to soak up the sunrays as a basis of power for produce electrical energy. APV unit is a package, linked meeting of characteristically 4x6 solar compartment. Solar PV panel comprise the solar collection of a photovoltaic scheme that generate and provisions solar electrical energy in profitable and housing application radiating from substance in its meadow of sight. They are life form second-hand in PIR-based movement detectors.

All substance with a hotness on top of total zero emit warmth energy in the shape of emission. More often than not this energy is not able to be seen to the person eye since it radiate at infrared wavelengths, but electronic plans intended for such a reason can notice it

2 WINDMILL

A wind turbine is a machine that electronic antenna that events infrared (IR) glow A liquid-crystal display (LCD) is a flat-panel show convert the wind kinetic energy into energy. The word appear to have migrate from similar hydroelectric skill. The technical description for this type of machine id an airfoil-powered generator

3 PIR SENSOR

A inert infrared antenna (PIR sensor) is an current sense instruments grater electrical sound resistance. The normal analog present indication variety is 4mA to 20 mA.

4 LDR SENSOR

A LDR is a light-controlled changeable resistor. The confrontation of a photoresistor decrease with rising event light strength; in other words, it exhibit photoconductivity. A photoresistor is been sensible in light-sensitive detector circuits, and light-activated and dark-activated switch circuits

5 MICROCONTROLLER

A microcontroller is a little processor on a solitary included route. A microcontroller contain one or more CPU, s along with reminiscence and programmable input/output peripherals. agenda reminiscence is in the form of Ferroelectric Ram, Flash and OTP ROM as well as little quantity of RAM.

6 VOLTAGE AND CURRENT DETECTOR

In instrumentation circuitry, DC signal are being second-hand as analog representation of bodily capacity such as hotness, force, run heaviness and movement. Most usually,

DC current sign are second-hand since present signal are precisely equivalent in scale all through the sequence route

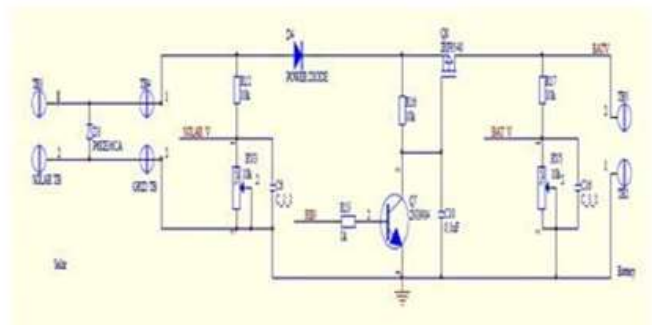


Fig4.Battery charging circuit

III. SOFTWARE SYSTEM DESIGN

Ring transport present as of basis to weight, while electrical energy signal in a similar route might differ as of one end to additional owing to resistive cable wounded. Also, current-sensing instrument characteristically have low impedance, which give or other by electronic means modulate visual machine that use the light-modulating property of fluid crystals. Liquid crystals do not produce glow in a straight line, in its place by a taillight or reflector to create imagery in dye or neutral. Small LCD screens are ordinary in moveable customer plans such as watches, calculators, and movable telephones, counting smartphones.

We have second-hand an Alphanumeric LCD 16X4(ie.16 character can be displayed and four such lines).

IV . HARDWARE SYSTEM DESIGN

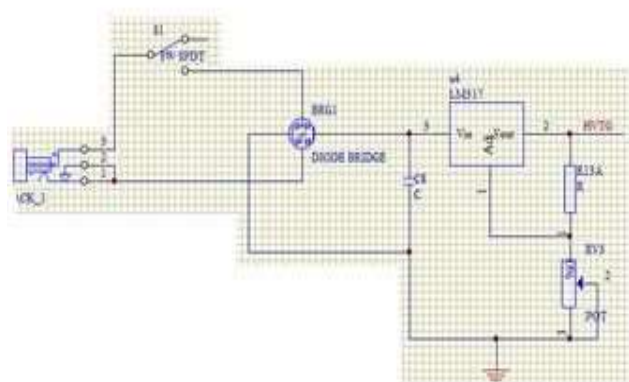


Fig 2. AC to DC conversion Circuit

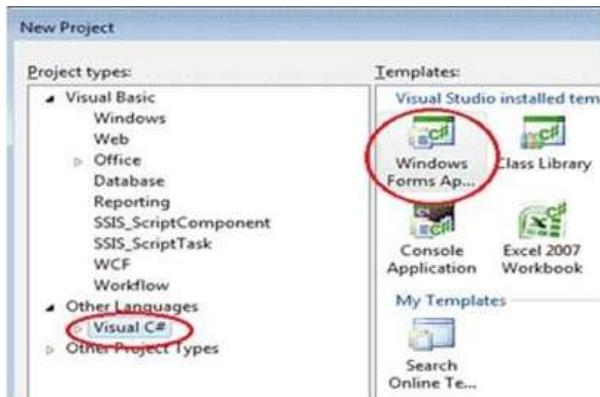


Fig3. USB/Mobile charging circuit

Designing Graphical User Interface

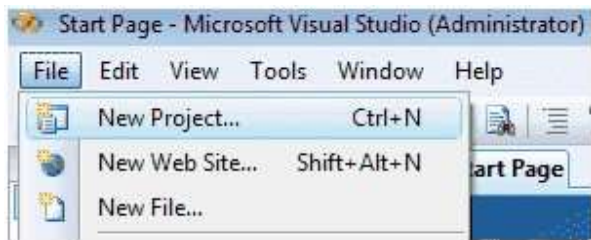
C# has all the skin of any influential, contemporary verbal communication. In C#, the the majority fast and suitable way to make your consumer border is to do so visually, by the Windows form fashionable and Toolbox. Windows form wheel are reusable mechanism that sum up user border functionality and are used in client-side Windows base application.

A manage is a part on a shape used to show in order or believe consumer contribution. The manage group of students provide the base functionality for all wheel that are displayed on a shape.

From the next ladder you can appreciate how to put a new manage on windows shape.

How to create a new project in C#?

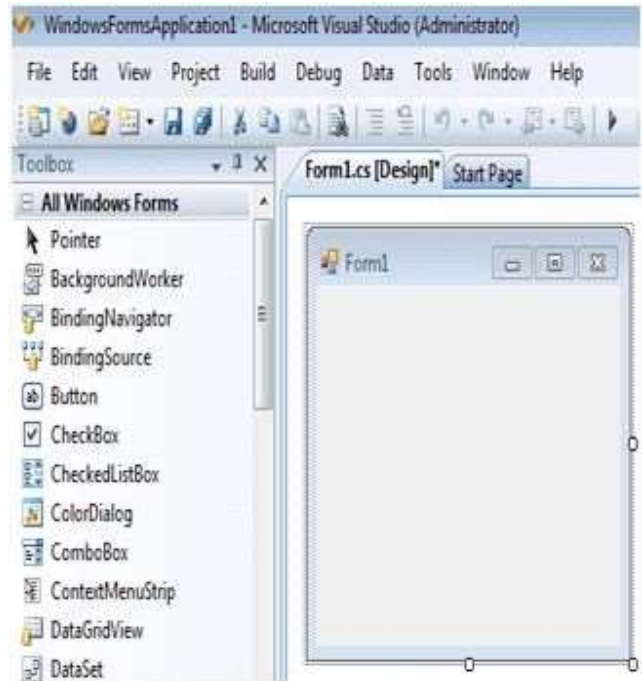
Open your chart Studio surroundings and Click File->New scheme



Then you will get a New scheme conversation Box asking in which verbal communication you desire to make a new scheme

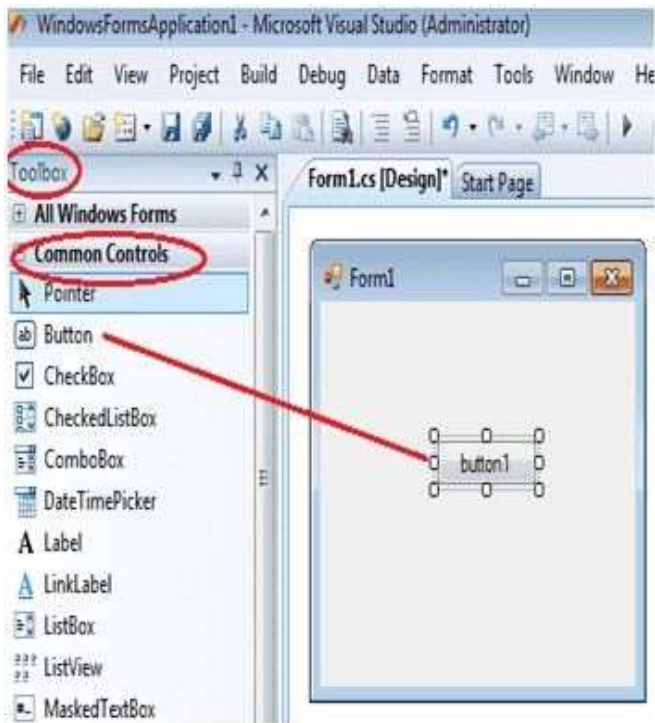
Choose Visual C# from the list, after that you will get the next screen.

Now you can put in wheel in your shape Control.



How to add controls to Form?

In the absent side of the chart Studio surroundings you can observe the Tool Box. There are plenty of wheel group there in the Tool Box according to their functionalities. Just click the + sign previous to every compilation then you can see the wheel in the group. You can decide basic wheel from ordinary wheel group. You can place the control in your shape by haul and drop the manage as of your toolbox to shape control.



How to drag and drop controls?

In the above picture we haul and fall the key manage as of Toolbox - Common manage to shape control. Now you can create write codes on each manage to make your program. The last GUI face board would look similar to the demonstrate shape below.

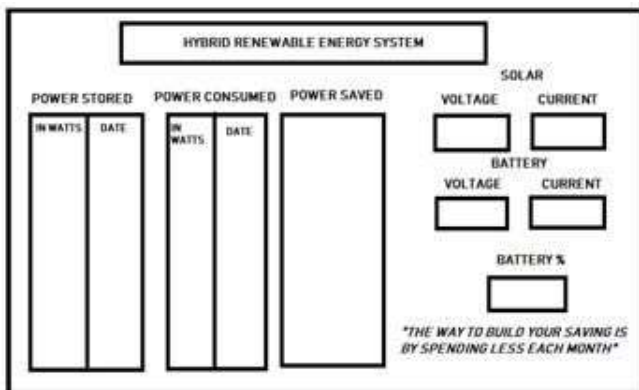


Figure: 6.3.1 Front panel of the GUI

V. CONCLUSION

- The scheme intended base on the reference from a variety of alike design implement previous provide a costeffective and moveable device for achieve well-organized energy organization.

- It can be additional be better by addition one more height i.e. hydro power for an greater than previous to power financial plan.

REFERENCES

- [1] A. E. m. Gado, “Impact the expansion of the production of generation of solar power on the low voltage network in egypt,” in 2015 Saudi Arabia Smart Grid (SASG), Dec 2015, pp. 1–4.
- [2] N. Jabalameli, S. Deilami, M. A. S. Masoum, and F. Shahnian, “Rooftop pv with battery storage for constant output power production considering load characteristics,” in Electrical and Electronics Engineering (ELECO), 2013 eighth International Conference on, Nov 2013, pp. 142–146.
- [3] A.Chersin, W. Ongsakul, and J. Mitra, “Improving of uncertain power generation of rooftop solar pv using battery storage,” in Green Energy for Sustainable Development (ICUE), 2014 International Conference and Utility Exhibition on, March 2014, pp. 1–4.
- [4] F. Giraud and Z. M. Salameh, “Steady-state performance of a gridconnected rooftop hybrid wind-photovoltaic power system with battery storage,” in Power Engineering Society Winter Meeting, 2001. IEEE, vol. 3, 2001, pp. 978 vol.3–.
- [5] Y. Kumar and R. Bhimasingu, “Optimal sizing of microgrid for an urban community building in south India using homer,” in Power Electronics, Drives and Energy Systems (PEDES), 2014 IEEE International Conference on. IEEE, 2014, pp. 1–6.