

# JOB CONNECT

Deep Patel<sup>1</sup>, Abhi Patel<sup>2</sup>, Prof. Ajaykumar T. Shah<sup>3</sup>

Department of Computer Engineering

<sup>1,2</sup> Alpha College of Engineering & Technology, Gujarat, India  
<sup>3</sup>H.O.D, Alpha College of Engineering & Technology, Gujarat, India

**Abstract-** The main purpose of the website is to reduce the effort by the companies and save their time and avoid unnecessary rushes at the college for student placement.

Company master: companies will have connected to system and get permission to access system. Then company do filtering to select applicable student for placement.

To connect all companies and colleges at one place for placement.

Colleges that use our placement management system no longer need to work with Excel Sheets and do any kind of redundant work. List compilation is now a one click process and it is highly convenient for both the students and the placement in charges

**Keywords-** Placement, Job, Interview, Campus Drive.

## I. INTRODUCTION

The project aimed at creating a web based software for managing the placement process in colleges and helping the student and placement in charges save loads of valuable time.

It makes the process less cumbersome and totally computerized ensuring clear transparency. Job Connect is the online system to help the companies and college for easy placement of student.

Colleges that use our system no longer need to work with Excel Sheets and do any kind of redundant work. List compilation is now a one click processes and it is highly convenient for both the students and the placement in charges.

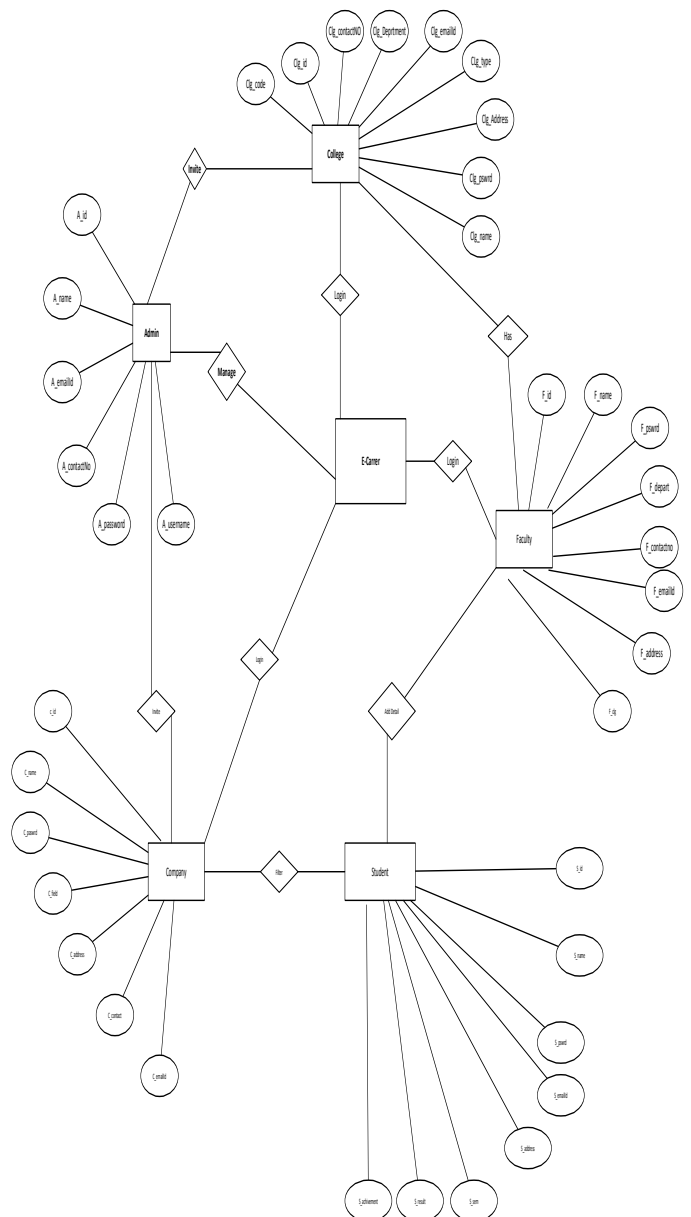
In our system colleges are add details of student from these details connected companies do filtering and choose applicable student for placements.

Admin is a main part of system. All controls about system are configuring by the admin like User Permission, User Role, Module Rights, Master forms like: companies, faculty, colleges and all other system configurations.

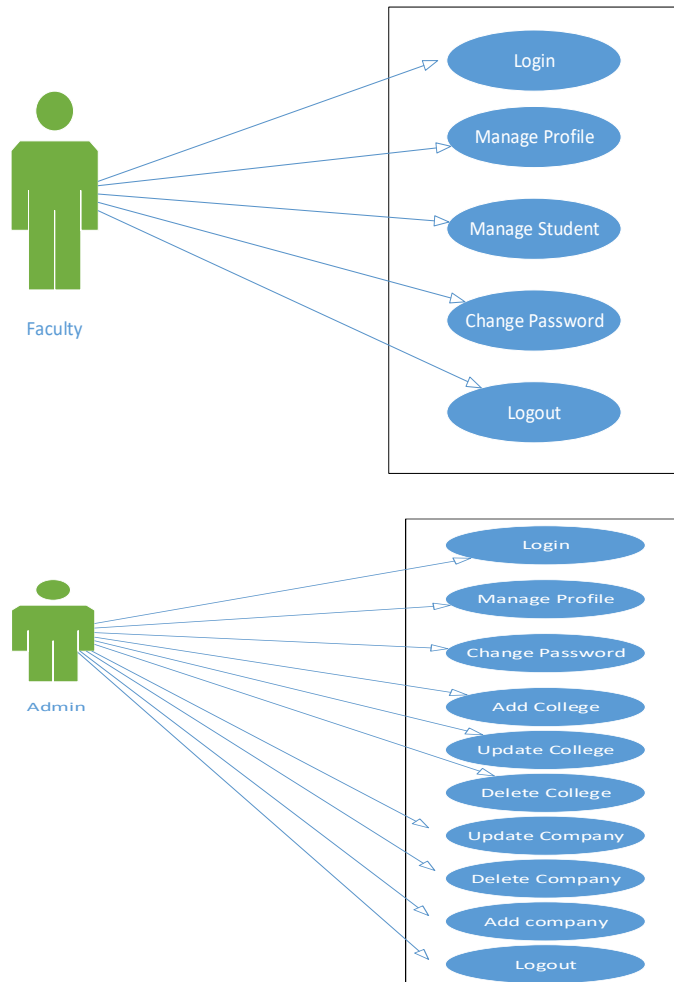
College master: colleges will be connected with our system and get permission to access this system. In college master, there is one faculty who entered details of students in branch wise.

## II. RESEARCH METHODOLOGY

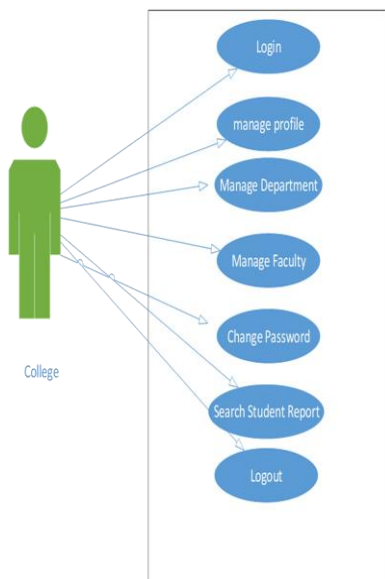
Entity Relationship Diagram:



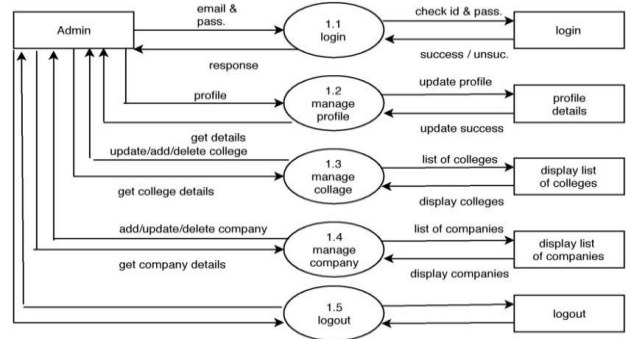
Use-case Diagram:



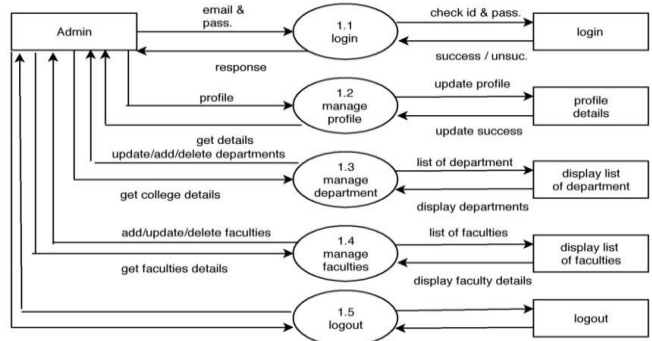
Use-Case Diagram for College



Data Flow Diagram:



DFD Diagram For Admin



DFD Diagram For College

**III. FUTURE ENHANCEMENT**

The scope of Jobconnect is to chaining the companies and colleges. It means to combine the multiple colleges and companies in one single website. colleges will be connected with our system and get permission to access this system. In college master, there is one faculty who entered details of students in branch wise. companies will have connected to system and get permission to access system. Then company do filtering to select applicable student for placement.

**IV. CONCLUSION**

Make the project user friendly and more interactive. We hope the “Job Connect” should be useful project to the user as well as to the company. Lastly one more time we heartily thankful to all or professors who have helped us directly and indirectly to make this project work complete during the entire project work. We have completed our project work with the blessing of our family members and kind help of our friends.

**REFERENCES**

- [1] Google drive (<https://drive.google.com>)
- [2] One drive by Microsoft(<https://onedrive.live.com>)
- [3] Drop box (<https://www.dropbox.com>)

[4] Amazon Drive (<https://www.cloudibn.com>)

[5] Icloud (<https://www.apple.com>)

**Language**

[6] Html ([www.w3school.com](http://www.w3school.com) )

[7] java

[8] MVCArchitecture

[9] Css ([www.w3school.com](http://www.w3school.com))

[10] SQL ([www.w3schools.com](http://www.w3schools.com))