

Experimental Investigation on Silica Fume As Partial Replacement of Cement For M-25 Grade Concrete

Prabhulal Chouhan¹, Sagar Jamle², M.P. Verma³

^{1,2,3}Department Of Civil Engineering

^{1,2,3}Oriental University, Indore, M.P., India.

Abstract- These days, concrete are the most adaptable structure materials because it can be designed to survive the harshest environments while taking on the most encouraging forms. In the present scenario most concrete mixture contains additional cementitious material which forms element of the cementitious element. The main advantage of supplementary cementitious material is their capability to replace certain amount of cement and still capable to present cementitious property, as a result reducing the cost of using Portland cement. The waste materials which can be used as additional cementitious material like fly ash, silica fume, blast furnace, steel slag etc. From all these waste material the most successful cementitious material is silica fume because it improves the strength and durability of concrete to such level that recent design rules identify for the addition of silica fume for design of high strength concrete. Silica fume is also known as micro silica; it is used as an artificial pozzolanic super plasticizer. Now days the high strength and high performance concrete is extensively used in much civil engineering structure. To reduce the amount of cement in concrete supplementary material are used. Silica fume is most popular material used in the concrete to improve its compressive, strength. For this purpose silica fume is replaced by 0%, 5%, 7.5%, 12.5%, 15%, 20% & 25% by the weight of cement. Water binder ratio is taken 0.42 for M-25 grade of concrete. Various tests were conducted in the research which showed the results of the same percentage at the different of 0% 5%, 7.5%, 12.5%, 15%, 20% & 25% for the time period of 7, 14, and 28 days curing as a substitution of cement by micro silica on compressive strength.

Keywords- Compressive Strength, Silica Fume, W/C Ratio, Replacement, Micro Silica.

I. INTRODUCTION

Concrete is a most commonly used building material which is a mixture of cement, sand, coarse aggregate and water. It is used for construction of multi-storey buildings, dams, road pavement, tanks, offshore structures, canal lining. The method of selecting appropriate ingredients of concrete and determining their relative amount with the intention of producing a concrete of the necessary strength durability and

workability as efficiently as possible is termed the concrete mix design. The compressive strength of harden concrete is commonly considered to be an index of its extra properties depends upon a lot of factors e.g. worth and amount of cement water and aggregates batching and mixing placing compaction and curing. The cost of concrete prepared by the cost of materials plant and labour the variation in the cost of material begin from the information that the cement is numerous times costly than the aggregates thus the intent is to produce a mix as feasible from the practical point of view the rich mixes may leads to high shrinkage and crack in the structural concrete and to development of high heat of hydration is mass concrete which may cause cracking. The genuine cost of concrete is related to cost of materials essential for produce a minimum mean strength called characteristic strength that is specific by designer of the structures. This depends on the quality control measures but there is no doubt that quality control add to the cost of concrete. The level of quality control is often an inexpensive cooperation and depends on the size and type of job nowadays engineers and scientists are trying to enhance the strength of concrete by adding the several other economical and waste material as a partial substitute of cement or as a admixture fly ash, silica fume, steel slag etc. are the few examples of these types of materials. These materials are generally by-product from further industries for example fly ash is a waste product from power plants and silica fume is a by-product resulting from decrease of high purity quartz by coal or coke and wood chips in an electric arc furnace during production of silicon metal or ferrosilicon alloys. But nowadays silica fume is used in large amount because it enhances the property of concrete. The use of micro silica as a pozzolanic material has enhanced in recent years because when mixed in definite proportions it improves the properties of both fresh and hard concrete like durability, strength, permeability and compressive strength, flexural strength and tensile strength.

II. MATERIALS & METHODOLOGY

1. MATERIALS USED

1) CEMENT:

Ordinary Portland cement (OPC) Of 53 grades satisfying the requirements of IS: 8112- 1939 is used. The specific gravity of cement was found to be 3.0.

2) FINE AGGREGATES:

Sand is the main component grading zone-II of IS: 383-1978 was used with specific gravity of 2.62 and water absorption of 1.8% at 24 hours.

3) COARSE AGGREGATES:

Mechanically crushed stone of 20mm maximum size, satisfying to IS: 383-1978 was used. The specific gravity was found to be 2.62 and 2.64 and water absorption is 0.16% and 0.18% at 24 hours of 20mm aggregates respectively.

4) SILICA FUME:

Silica fume is a byproduct in the decrease of high-purity quartz with coke in electric arc furnaces in the manufacture of silicon and ferrosilicon alloys. Micro silica consist of fine particle with a surface area on the order of 215,280 ft²/lb (20,000 m²/kg) when precise by nitrogen adsorption techniques, with particle just about one hundredth the size of the average cement. Because of its excessive fineness and high silica content, micro silica is a very efficient pozzolanic material particle. Micro silica is added to Portland cement concrete to enhance its properties, in particular its compressive strength, bond strength, and abrasion resistance. These improvement stems from both the mechanical improvements resulting from addition of an extremely fine particle to the cement paste mix as well as from the pozzolanic reactions between the micro silica and liberated calcium hydroxide in the paste. Addition of silica fume also decrease the permeability of concrete to chloride ions, which protect the reinforcing steel of concrete from corrosion, especially in chloride-rich environment such as coastal region. While silica fume is incorporated, the rate of cement hydration increases at the early hours due to liberation of OH ions and alkalis into the pore fluid. It has been reported that the pozzolanic reaction of silica fume is very significant and the no evaporable water content decreases between 90 and 550 days at low water /binder ratios with the addition of silica fume.

Table 1. Physical Properties of Silica Fume

Properties	Observed Values
Color	Dark grey
Specific gravity	2.2
Fineness modulus	20000m ² /kg
Bulk Modulus	240kg/m ³

Table 2. Chemical Properties of Silica Fume

Properties	Observed Values
SiO ₂	90-96%
Na ₂ O	0.3-0.7%
Fe ₂ O ₃	0.3-0.8%
C	0.5-1.4%
CaO	0.1-0.6%
MgO	0.4-1.5%
K ₂ O	0.04-1.0%
Loss of ignition (C+S)	0.7-2.5%
S	0.1-2.5%
Al ₂ O ₃	0.6 -3.0%

III. METHODOLOGY

1. COMPRESSIVE STRENGTH TEST:

In this study, a total number of 45 cubes for the control and cement replacement levels of 2.5%, 5%, 10% and 20% were produced respectively. For the compressive strength, 150mm x 150mm x 150mm cubes mould were used to cast the cubes and 3 specimens were tested for each age in a particular mix (i.e. the cubes were crushed at 14 days). All freshly cast specimens were left in the cast for 24 hours before being de – mould and then submerged in water for curing until the time of testing.

IV. RESULTS AND DISCUSSIONS

Table 1. Compressive Strength Test Result

Mix	Replacement %	Compressive Strength (N/mm ²)		
		7 days	14 days	28 days
M-1	0	18.17	20.63	24.13
M-2	5	15.36	17.71	20.32
M-3	7.5	17.23	19.87	22.86
M-4	12.5	18.91	21.75	25.16
M-5	15	21.74	24.72	28.67
M-6	20	21.08	24.03	27.36
M-7	25	21.56	23.06	28.17

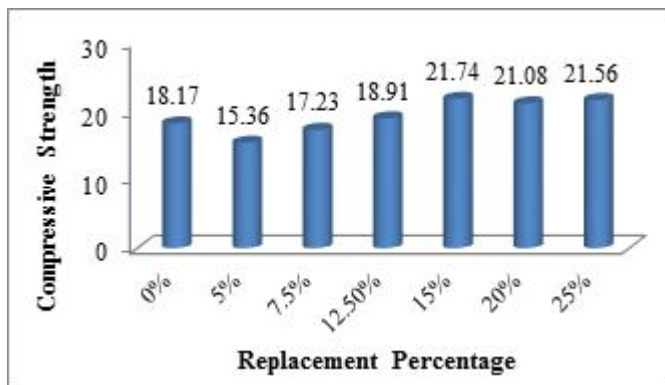


Figure 1. Graph 1: Compressive Strength for 7 days (in N/mm²)

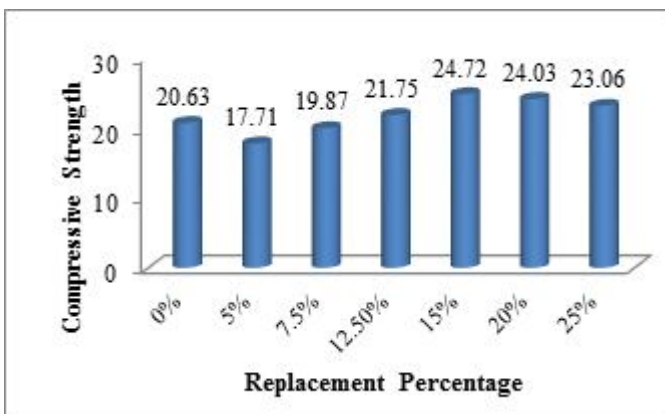


Figure 2. Graph 2: Compressive Strength for 14 days (in N/mm²)

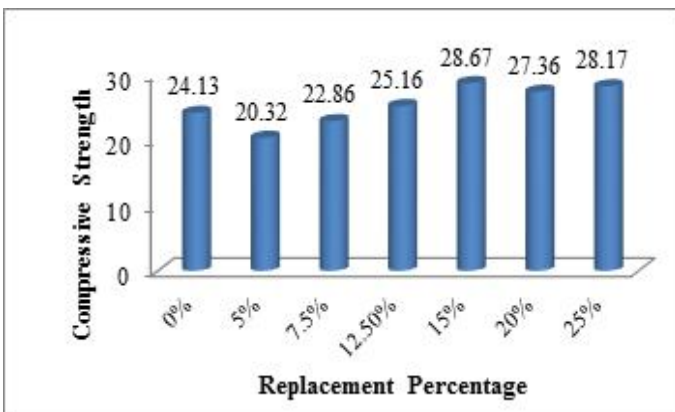


Figure 3. Graph 3: Compressive Strength for 28 days (in N/mm²)

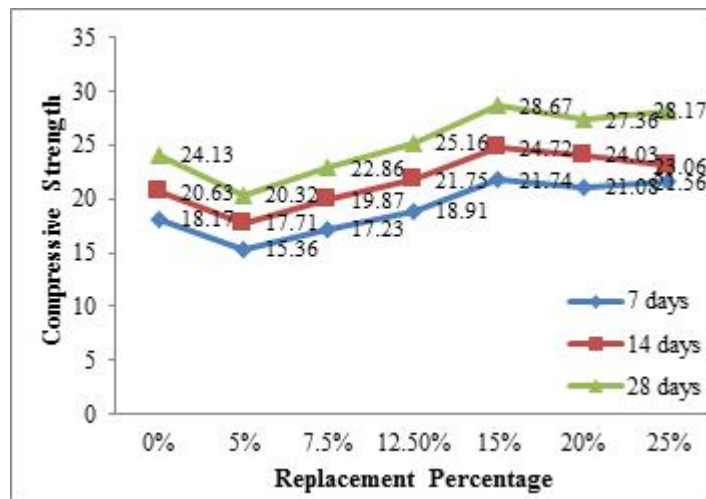


Figure 4. Graph 4: Compressive Strength at various age (in N/mm²)

As shown in the graph 1: (7 days strength), when cement is partially replaced 15% by SF, compressive strength is increased by 27.68%. Afterwards when addition of % of SF is replaced, strength starts decreasing, a minimum strength is achieved.

When graph 2: (14 days strength) is analyzed, 15 % replacement of silica fume gives 24.5% more strength when compared with conventional concrete. 28 days strength in graph 3 shows an increment of 26.85% of strength of 15% replacement of silica fume as compared with conventional concrete. Again strength is decreased when addition of percentage of silica fume As discussed here, it can be said that an increment in compressive strength of 15 % replacement of silica fume gives 27% strength is achieved as compared with conventional concrete mix i.e. Mix-01.

V. CONCLUSION

After performing the test and analyzing their result, the following conclusions have been derived:

- 1) The results achieved from the existing study shows that silica fumes is great potential for the utilization in concrete as replacement of cement.
- 2) Workability of concrete decreases as proportion of silica fumes increases.
- 3) Maximum compressive strength was observed when silica fume replacement is about 15%.

REFERENCES

[1] Prof. Vishal S. Ghutke, Prof. Pranita S.Bhandari, Influence Of Silica Fume On Concrete Iosr Journal Of Mechanical And Civil Engineering (Iosr - Jmce) E-Issn:

2278-1684, P-Issn: 2320-334.

On Strength And Durability Parameters Of Concrete
International Journal Of Engineering Sciences &
Emerging Technologies, August 2012. Issn: 2231 – 6604,
Volume3, Issue 1, Pp: 28-35 © Ijeset.

- [2] Faseyemi Victor Ajileye, Investigations On Micro Silica (Silica Fume) As Partial Cement Replacement In Concrete Global Journal Of Researches In Engineering Civil And Structural Engineering Volume 12 Issue 1 Version 1.0 January 2012 Type: Double Blind Peer Reviewed International Research Journal Publisher: Global Journals Inc. (Usa) Online Issn: 2249-4596 & Print Issn: 0975-5861.
- [3] M. R. Karim, M. F. M. Zain, M. Jamil, F. C. Lai And M. N. Islam, Strength Development Of Mortar And Concrete Containing Fly Ash, International Journal Of The Physical Sciences Vol. 6(17), Pp. 4137-4153, 2 September, 2011.
- [4] Vikas Srivastava, V.C. Agarwal And Rakesh Kumar Effect Of Silica Fume On Mechanical Properties Of Concrete J. Acad. Indus. Res. Vol. 1(4) September 2012 Issn: 2278-5213.
- [5] Pratik Patel Dr. Indrajit N. Patel Effect Of Partial Replacement Of Cement With Silica Fume And Cellulose Fibre On Workability & Compressive Strength Of High Performance Concrete Volume : 3 | Issue : 7 | July 2013 | Issn - 2249-555x.
- [6] Nasratullah Amarkhail Effects Of Silica Fume On Properties Of High-Strength Concrete International Journal Of Technical Research And Applications E-Issn: 2320-8163 Special Issue 32 (September, 2015), Pp. 13-19.
- [7] Dilip Kumar Singha Roy, Amitava Sil Effect Of Partial Replacement Of Cement By Silica Fume On Hardened Concrete International Journal Of Emerging Technology And Advanced Engineering (Issn 2250-2459, Volume 2, Issue 8, August 2012).
- [8] Debabrata Pradhan, D. Dutt Influence Of Silica Fume On Normal Concrete, Debabrata Pradhan Et Al. Int. Journal Of Engineering Research And Applications Vol. 3, Issue 5, Sep-Oct 2013, Pp.79-82.
- [9] Verma Ajay, Chandak Rajeevand Yadav R.K. Effect Of Micro Silica On The Strength Of Concrete With Ordinary Portland Cement, Received 2nd June 2012, Revised 10th June 2012, Accepted 15th June 2012, Issn 2278 – 9472, Vol. 1(3), 1-4, Sept. (2012) Res. J. Engineering Sci.
- [10] N. K. Amudhavalli, Jeena Mathew, Effect Of Silica Fume