

Security Lock For Windows Based System

Sujit Jadhav¹, Prashant Gaikwad², Ravish kumar³, Prof. Vidya G. Shitole⁴

^{1,2,3,4} Department of Computer Engineering

^{1,2,3,4} SPPU/ Suman Ramesh Tulsiani College Of Engineering ,kamshet.

Abstract- In Window operation system there is noway to protect your applications,documents, Once who Know the your password Access easily, This software is windows based application. Using this software, user can restrict other users from using the applications which in the system. This project allows us to lock and unlock the installed software in the computer. It's gives the screenshot of unauthorized user's by using it's webcam .this way we can secure the our Applications , documents.

I. INTRODUCTION

In any System one who know the Password ,they can easily access the files, application etc. There are many ways in which operating system to be a Protected from person using the application in your computer, but not able to built strong security access. The proposed Application Lock for windows based system makes user system more secure. Now days we know that single system can be used by multiple user so there is chances of some confidential data or records can be unintentionally deleted by other user(person). So, to provide better security and better GUI we implements a software called (Application lock for windows based system).To overcome the limitation of previous application for Microsoft as operating system users. In our system we are mainly dealing with multiple security level which were not available in existing system. We are providing flexibility to user while locking or unlocking application. To deal with strong authentication level we are providing two level security.The purpose of this application is to provide multiple facilities to user along with locking features on system/user applications. For built a strong and secure system we use a webcam that's give screenshots of unauthorized user's Images on registred email address, after three unsuccessfull attempt.

This we can Identify the unauthorized user and we can prevent access of our Application.The system is more secure and protected.

II. LITERATURE REVIEW

At present days we know that single system can be accessed by many user so there is probability that some important data or records can be unintentionally deleted by

other users. So to resticates this and keeping away unauthorised user from the system we are going to implement a software called Application Lock. In the process of locking/unlocking user face many problem in previous window system. we implement better reliable and flexible software Application lock for windows based system.

Sub-headings This software provides security for system as well as user applications and increases the protections level of the system. Another issue is that if someone accesses our system or user application and they can delete/corrupt all the data relevant to that application. E.g If we provide lock on ms-word then unsanctioned user can not able to open that application. And through this we can protect our system from that unsanctioned user.

Application lock for windows based system is the software to be designed mainly for windows user to protect the installed application of their system It will not provide any benchmark for user . In this software user can be able to lock the motherboard of the system, operating system as well. In his application there is also a provision for setting the password, changing the password, and recovering the password as well online as well as offline.

III. GOALS AND OBJECTIVES

Goals:-

- Making system more robust and flexible from unsanctioned user.
- Providing the dual level security
- Providing better GUI.

Objective:-

- Lock / Unlock System applications.
- Lock / Unlock User applications.
- Lock / Unlock USB drives.
- Enable / Disable Control panel.
- Enable / Disable Components in Control panel.

IV. MOTIVATION

To overcome the failures of previous applications, we are going to implement an application for, Microsoft operating system users. In our system we are mainly focusing with two

level security which were not available in existing system we are providing flexibility as well as better GUI to user while locking or unlocking application. To deal with strong authentication level we are providing dual layer security.

The purpose of the system is that user feel more secure to use system. System is more secure than existing system and more reliable.

Existing system has limited number of locks and there is no any way to know Who is accessing your file, documents and applications.

V. EXISTING SYSTEM

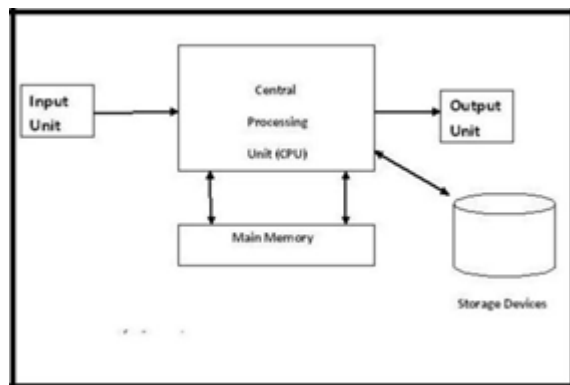


Figure 1. Existing system

In the previous system manufacturer provides locking facilities on few number of user and system application. Existing system have frustrating GUI which is very confusing for common user. We have removed all these drawbacks and provide better user friendly GUI. In existing system we don't know who want to try access your file, documents, application. In this system a Email is sent containing screenshot of unauthorized user.

VI. PROPOSED SYSTEM

In the previous system manufacturer provides locking facilities on few number of user and system application. Existing system have frustrating GUI which is very confusing for common user. We have removed all these drawbacks and provide better user friendly GUI. In existing system we have to lock few applications but by this software system user can use all the features which existing system has as well as device Lock and online and offline password recovery etc. We added the new modules, in this modules A email is sent on registered Email address.in this way we can identify the person. And take further actions.

VII. SYSTEM ARCHITECTURE

Software architecture refers to the high level structures of a software system, the discipline of creating such structures, and the documentation of these structures. These structures are needed to reason about the software system. Each structure comprises software elements, relations among them, and properties of both elements and relations. The architecture of a software system is a metaphor, analogous to the architecture of a building.

Software architecture is about making fundamental structural choices which are costly to Change once implemented. Software architecture choices include specific structural options from possibilities in the design of software. For example, the systems that controlled the space shuttle launch vehicle had the requirement of being very fast and very reliable. Therefore, an appropriate real-time computing language would need to be chosen. Additionally, to satisfy the need for reliability the choice could be made to have multiple redundant and independently produced copies of the program, and to run these copies on independent hardware while cross-checking results. Fig.1 shows the Architecture diagram of Application Lok for Windows Based System. In which overall system is described and modules of the system are shown. We are using Windows Registry as a storage element in our project. The Windows Registry is a hierarchical database that stores configuration settings and options on Microsoft Windows operating systems. In general we see that lot of project developer prefer to use the database as storage in their project but in this project our group mate decide to use the registry rather than database due to following reasons:

- High security level of Registry
- Doesnot need of any external additional Software
- Maintain protection to the storage the data in Registry is very easy as compare to any other database.

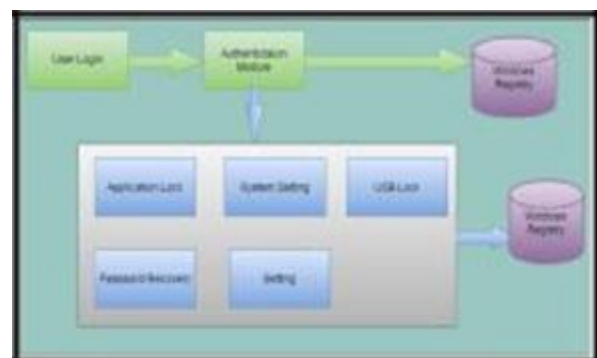


Figure 2. System Architecture

In registration process user should fill the information about himself with accurate information. This information may provide help in further operation like

password recovery and help from manufacturer also. To continue further user should fill the complete form and click on next button.

This form also provides the option of reset the whole information. This is the next registration form which is used to set the password in the form of image. And this image password will be used by system for the authentication purpose .When user wants to use Application Lock For Windows Based System Software, they must go through the authentication process. And whatever details entered in authentication process are compared with the details exists in the registry and accordingly user will be checked as authorized or unauthorized user.

Following are the different modules of the Windows Growing Security :

1. Registration Module :

In registration process user should fill the information about himself with accurate information. This information may provide help in further operation like password recovery and help from manufacturer also. To continue further user should fill the complete form and click on next button.in this here is login account like the gmail account form.

To continue further registration form user should fill the complete form and click on next button. This form also provides the option of reset the whole information. This is the next registration form which is used to set the password in the form of image. And this image password used by this software for the authentication purpose. As in last registration form user select the image password in the similar manner user must enter the text password and confirm that password. And this text password is used by this software as the second level authentication of user.

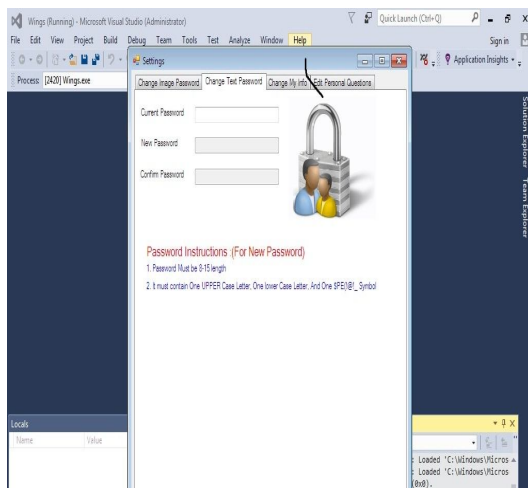


Figure 3.

2. Main window:

This is the main interfacing window of this software by using above provided option and menus user can access the whole software working and perform the functionality which is desired by the user. For locking the application, locking USB drive, getting the system information.

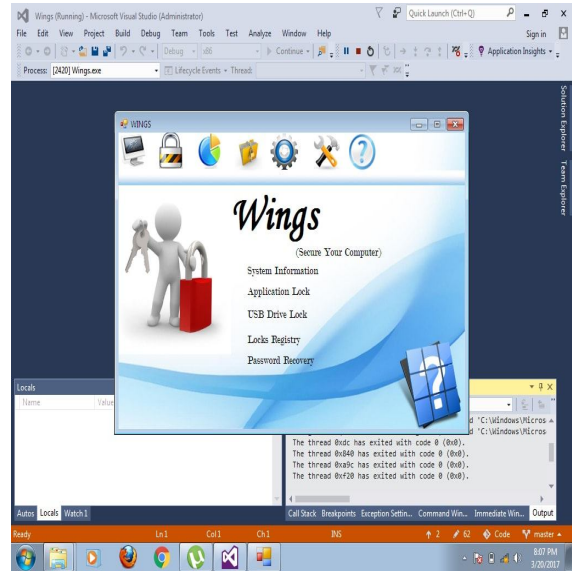


Figure 4.

3. System information Module :

This module will provide the information related to the operating system and motherboard and all relevant information about host. And it is very useful module as the user point of view to get the information about the system and its configuration. Different buttons are provided to user to make their choice for accessing the information about the machine.

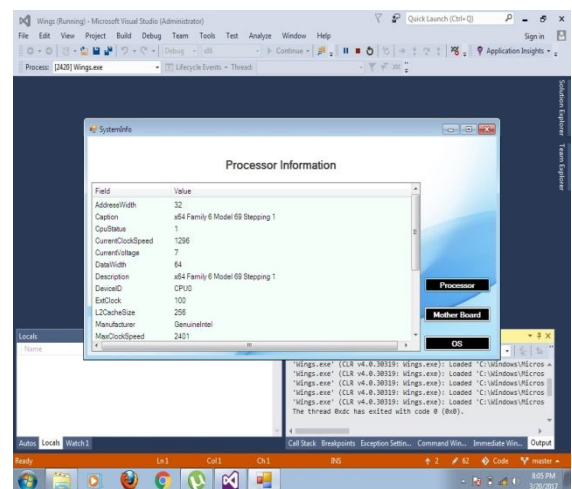


Figure 5.

4. Application Lock Module:

It is the main part of this software by using this user can able to lock the particular application as per the user requirement. For this purpose only user should click on the icon provided on window. And also this window provides the partitioning of the application into user application and system application.

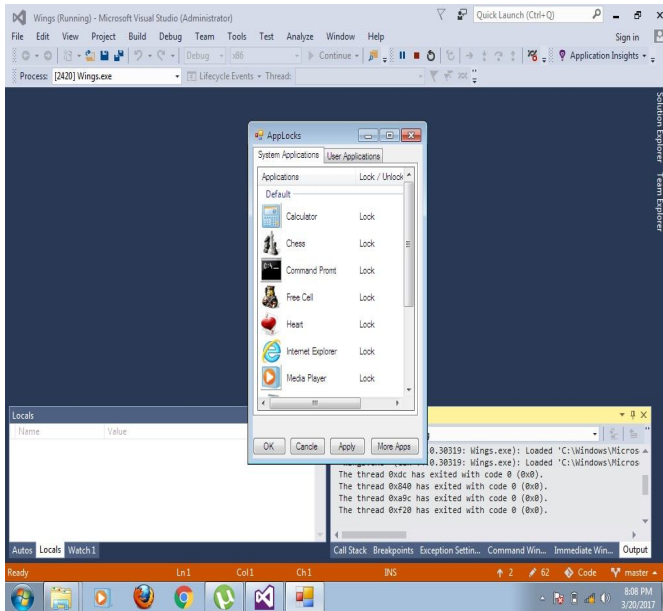


Figure 6.

5. USB Lock Module:

It is the special feature provided by this software to lock the USB drives. For locking the USB drive only user should click on the disable USB drive button and after that on ok button

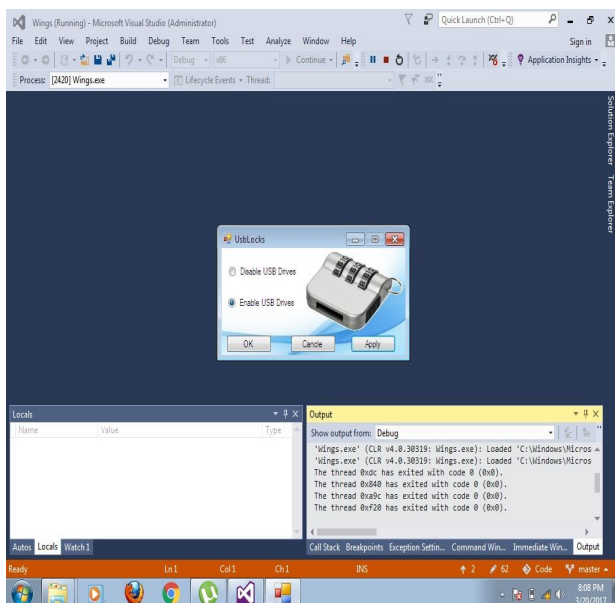


Figure 7.

6. System Setting module:

System setting module is the very interesting module of the project. This module is used to lock the various features provided by the operating system like control panel, run prompt, registry and many more. This feature make the system more secure which is the ultimate goal of this software.

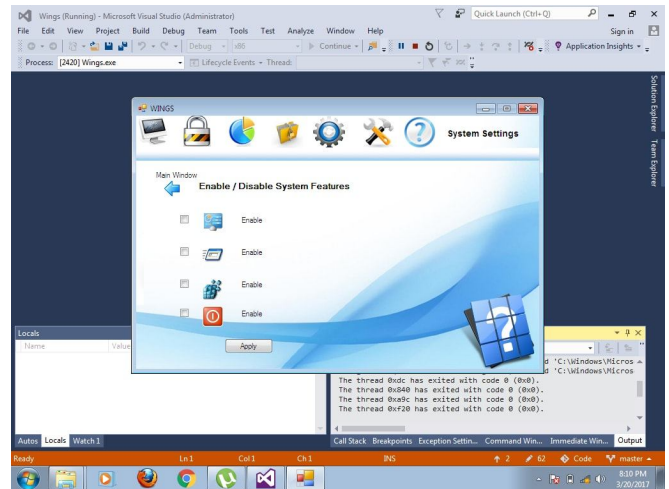


Figure 8.

7. Password Recovery Module:

It is most important module In his module user can recover his password in case of forgetting the his password due to some reason. It can be done via two ways select the three images and their respected position for using as the password.

Online Password Recovery:

In this case of password recovery user must have the internet connection in which online password is send on registered mail id, through it, it can recover the password.

Offline Password Recovery:

When the user doesn't have internet connection, the password can be recovered by giving the answer of personal questions like birth place, name of your best friend.

8. Help Module

This module is deal with when the user stuck on any problem want the help, it's provide the help with relevant solutions. when the user get any problem through this modules it's get proper answer.

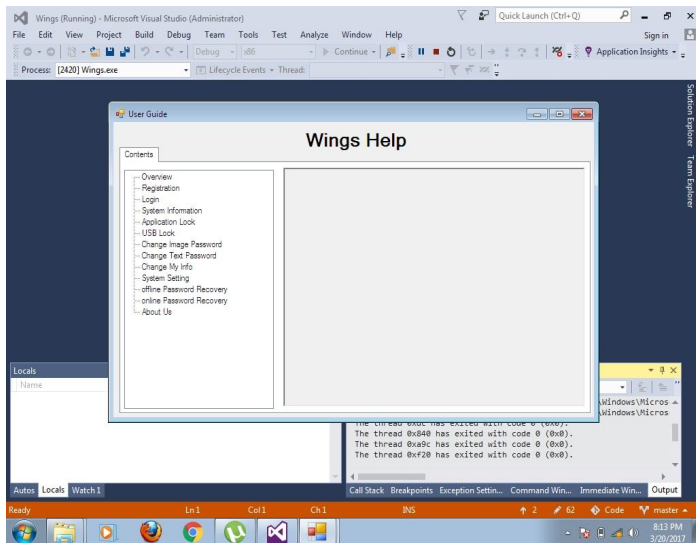


Figure 9.

VIII. FUTURE SCOPE

It's can also use for identify the particular user individually authentication mechanisms like Speech recognition can be used for increase security level. we can link with Adhar card Database to identify the unauthorized person identity. we can move one step forward to Digital India.

IX. CONCLUSION

This Project mainly focuses on security issues of windows operating system by providing the various lock to the system. It's providing the dual level lock system that is Image and Text password. It's also provided the online and offline password recovery so that user can easily access the system..We can know the who want try to access our document, data ,application. Now system is more secure.

REFERENCES

- [1] Tao Feng, ZhiminGao,Boumber D. Tzu-HuaLiu,DeSalvo N.XiZhao,Weidong Shi, USR: EnablingIdentity Awareness and Usable App Access Control During Hand-free Mobile Interactions,Published in: 6th International Conference on Mobile Computing, Applications and Services on6-7 Nov. 2014, Publisher: IEEE
- [2] Juan-hua, Zhu; Ang, Wu; Kai, Guo, PC Lock Software Juan-hua, Zhu; Ang, Wu; Kai, Guo, PC Lock Software Engineering andTechnology Journal VOL. 3, year 2010.
- [3] RajkumarJanakiraman, Sandeep Kumar, Sheng Zhang, Terence Sim, Using Continuous FaceVerification to Improve Desktop Security, Seventh IEEE Workshop on

Applications of ComputerVision (WACV/MOTION 05).

- [4] Brendan Dolan-Gavitt, (May,2008), Forensic analysis of the Windows registry in memory, MITRE Corporation, 202 Burlington Road, Bedford, MA, USA. 5 WANG Jing, SUN Chao-yi, FENO Li, ZHOU Ti (ICCA SM 2010), Research on Anomaly Behavior Blocking Method for Desktop Security, presented at computer application and System Modeling (ICCA SM), 2010 International conference