

Connected Waste Solutions: Harnessing Iot For Intelligent Waste Management

Ashutosh Kharat¹, Rucha Ingale²

^{1,2} K J Somaiya Institute of Technology, Sion, Mumbai, India

Abstract- *The paper depends on the idea of Automation utilized in squandering the executive's framework under the area of Cleanliness and Hygiene. Unloading trash onto the roads and in open regions is a typical summary found in every emerging nation and this basically winds up influencing the climate and making a few unhygienic conditions. To manage these issues Smart netbean is a philosophy advanced which is a blend of equipment and programming innovations for example interfacing Wi-Fi framework to the ordinary dustbin to give free web offices to the client for a specific timeframe. The innovation grants the client for keeping the encompassing clean and in this way, work connected at the hip for the legitimate waste administration in a region. Brilliant netbean involves numerous advancements, first and foremost the innovation for estimating how much garbage unloaded, also the development of the waste and in conclusion conveying vital messages and interfacing the client to the Wi-Fi framework. The proposed framework will work on a customer server model, a reason that will guarantee clean climate, great wellbeing, and contamination free society.*

Keywords- Loadcell, IOT, load detecting plate, Arduino, Wi-Fi, Internet.

I. INTRODUCTION

How much waste delivered ordinarily by the enterprises and the families is expanding at a shocking rate, furthermore the significant justification behind this is taking off utilization of bundled things, materials, paper, food, plastics, metals, glass and so forth, consequently the executives of this decline turns into a pivotal part in our ordinary life. In the majority of the created nations there are a large number of productive procedures which are utilized for the legitimate administration of this waste, however in certain nations particularly the creating ones the thoughtless mentality of individuals towards keeping up with clean environmental factors, alongside this many issues, for example, no severe laws for utilizing the biodegradable materials, no legitimate environmental arrangements, no laws for manageable improvement are the seed for the lethal aftereffects of waste administration. Because of the expanding squander, the public canisters which are utilized for gathering

this waste are spilling over, the territory is confused with rubbish, causing not just rotten roads yet in addition an adverse consequence on the wellbeing what's the climate. Squander is an essential issue, which should be tended to cleverly. We isolate the loss at our homes for ease at handling and reusing. We noticed junk vans coming unpredictable to homes making a raid of families. Due to these numerous regular folks avoid their over-burdened dustbins in open spaces. This thus increases ecological contamination.

The waste is an extraordinary issue for our wellbeing and the climate. It has many impacts which are repulsive. Garbage is a favorable place for microbes, bugs, and flies. These flies are the same that meander around the consumable and drop the offspring. Subsequently they increment the danger with food contamination, typhoid, gastroenteritis, salmonella, the bugs cause intestinal sickness dengue and so on close to these flies and bugs different creatures that succeed from the waste are the rodents and the homeless canines spreading illnesses the trash additionally causes different respiratory illnesses the poisonous pollutants like CO₂ methane, nitrous oxide close to wellbeing issues unfavorably influence the climate causing air contamination water contamination. Removal of dangerous waste like the electronic things, plastics in water influence the sea-going life and by implication the individuals. Spilling over trash is likewise a public problem and blemish. Everybody needs to visit new clean urban communities. A rancid city with rubbish all around the spot doesn't draw in travelers hence losing the cash income and the open doors.

As it grows, 62 million tons of trash is created ordinarily by the 377 million individuals living in metropolitan India, presently the world's third biggest trash generator. In any case, it's not how much waste produced that is so much of an issue as the way that in excess of 45 million tons, or 3 million trucks worth, of trash is untreated and discarded by metropolitan specialists consistently in an unhygienic way. It is extremely notable issue to bargain and find the appropriate solutions for it some of them resemble government ought to sanction rigid laws against individuals tossing rubbish, against the enterprises for not utilizing biodegradable material, more utilization of reuse things, lessen the utilization of non-degradable stuff, reuse the things,

hence carrying out this can lessen the loss dependent upon some degree. Alongside this utilization of innovation for appropriate unloading of junk and lessening its unsafe impacts is the idea put forward. The web these days has the world enthralled with it. Not a solitary individual lives without a web, telephone, tab or PC. It is accepted without availability u can't push forward in the present world however now and again because of weighty plans or network issues we can't admittance to the web, and consequently drawing in individuals towards free Wi-Fi. Giving a free Wi-Fi office to unloading squander into the dustbin would tackle the issue of waste and the web office in addition to accessibility of free assistance would help individuals go off the deep end and would go about as remuneration for keeping up with tidiness in the area.

II. LITERATURE SURVEY

This is anything but a unique thought, IOT based dustbin was executed and effectuated much previously. A few creators introduced frameworks where the sensors in the container checked if the canister is topped off to the edge or not. In the Even when it was filled, a computerized message was shipped off the server end of the framework, through the Arduino SIM module, which utilized the utilization of the Arduino board. When the server got the message it sent the message to the laborer in control, if the specialist was accessible, he would inform his/her essence by tolerating the work and would arrive at the necessary objective. In the event that the specialist was not accessible, the work would be moved to another laborer. A few creators additionally executed ongoing waste the board framework by utilizing savvy dustbins to check the filled level of dustbins whether they were filled. In this framework the data of everything shrewd dustbins can be gotten to from anyplace and whenever by the worried individual and he/she can make a choice likewise. By carrying out this proposed framework, the expense decrease, asset enhancement, viable utilization of brilliant dustbins was completed. This framework by implication decreased traffic in the city. In significant urban areas the trash assortment vehicle visited the region's regular two or threefold relying upon the number of inhabitants in the specific region. The System informs the status of every single residue container continuously so that the concerned authority can send the trash assortment vehicle just when the dustbin is full. Some proposed brilliant trash the executive's framework utilizing IR sensor, microcontroller and Wi-Fi module. This framework guaranteed the cleaning of dustbins soon when the trash level arrived at its most extreme. In the event that the dustbin was not cleaned in explicit time, then, at that point, the records were shipped off to the more significant position who made a proper move against the concerned worker for

hire. This framework additionally assisted with checking the phony reports and henceforth assisted with diminishing the debasement in the general administration framework. It at last assisted with keeping tidiness in the general public Continuously the Dustbin with Wi Fi Router appended in it was additionally presented. The Dustbin had a Passive Infrared Sensor. The Wi-Fi switch was modified to show the impermanent associating code.

At the point when the client threw waste in the dustbin, the PIR sensor identified the garbage and conveyed messages to the microcontroller. The microcontroller distinguished the signs and sent them to the switch gadget. The switch confirmed the signs also produced arbitrary codes and afterward sent it again to the microcontroller. The microcontroller filtered the signs and sent them to the LCD Display. The LCD Display showed it. The client entered the irregular code created by the switch on the PHP interface which was facilitated on the server. The server then, at that point, reacted to the solicitation and showed the Master Wi-Fi secret word to the client. The client then, at that point, utilized the Master Wi-Fi secret key to associate with the web. The client got the web access for 10 minutes and naturally got detached.

III. FLAWS IN THE EXISTING SYSTEM

The primary issues of the current strong waste assortment cycle and the board framework are as per the following:

- More entanglements in the handling.
- many controlling units connected with one another
- higher execution cost

IV. PROPOSED SYSTEM

Brilliant netbin, an ordinary dustbin raised utilizing a microcontroller-based stage Arduino Uno board interacted with Load sensor also, Wi-Fi module. It comprises 2 fundamental modules: the mechanical planned parts and the electric parts. The mechanical parts consist of shredder and the heap detecting plate while the electric parts consist of different parts that are the Arduino Loadcell, LCD Display screen, IR Sensor, Amplifier, Relay module, Wi-Fi Router. At the point when the client dumps the waste into the dustbin the junk will be first crushed inside the shredder and the destroyed garbage will then get gathered onto the heap detecting plate present in the dustbin. The heap sensor has been appended to the heap detecting plate this A. The framework is made out of following parts:

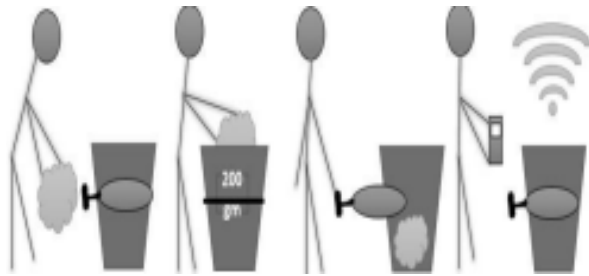


Fig.1: Proposed System.

V. SYSTEM ARCHITECTURE



Fig.2: System Architecture

A. The system is composed of following components:

1. The dustbin:

A typical dustbin made of plastic or metal which can hold up every one of the parts introduced in it, the mechanical shredder introduced on the top side and the heap detecting plate at the unremarkable level all the IOT parts will be introduced at the base side. Along these lines, it ought to be of normal size (height_600- 700 mm dia_)

2. Sensors:

The detecting unit will essentially comprise of 2 sensors for example the heap sensor and the IR sensor the heap sensor utilized for estimating the weight of garbage being unloaded into the dustbin and this is appended to the base side of burden detecting plate, the IR sensor will distinguish the descending movement of garbage once the heap detecting plate s pulled out and the waste tumbles down in the receptacle.

3. Load cell:

During an estimation, weight follows up on the heap cell's metal spring component and causes flexible misshaping.

This strain (positive or negative) is changed over into an electrical sign by a strain measure (SG) that is introduced on the spring component.

Item Name: Load Cell

Load: 10Kg/22lb

Evaluated Output: 1+/- 0.15mV/V

Suggest Excitation Voltage: DC 5V; Max Excitation Voltage: DC 10V



Fig.3: Load Sensor

4. IR sensor:

An infrared sensor is an electronic instrument that is utilized to sense specific qualities of its environmental factors. It does this by either transmitting or distinguishing infrared radiation. Infrared sensors are likewise fit for estimating the hotness being produced by an item and identifying movement. Working Voltage Range 3.6~5 VDC Normal Current Consumption (mA) 0.06 Recognition Angle 35 Å° Distance Measuring Range 2 ~ 30cm.



Fig.4: IR Sensor

5. Wi-Fi module

It comprises the switch which will give the web offices to the client for unloading the garbage into the receptacle

6. Microcontroller:

Arduino will be the handling unit for the implanted framework at the containers. This will be utilized for controlling sensors and sending data.

7. HX711 amplifier:

Differential info voltage: $\pm 40\text{mV}$ (Full-scale differential information voltage is $\pm 40\text{mV}$) Working Voltage: 2.7V to 5VDC Working current: $<10\text{ mA}$.

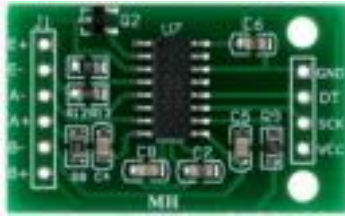


Fig.5: HX711 Amplifier

8. LCD display:

Working Voltage is 4.7V to 5.3V Current utilization is 1mA without backdrop illumination



Fig.8: LCD Display (16*2).

9. Power supply

The Power supply will give electrical capacity to the microcontroller, the shredder, and the switch which are the most significant pieces of the framework.

10. Shredder:

A mechanical even two shaft shredder is a machine utilized for decreasing the size of all sorts of material.it consists of destroying edge, stacking box, box section, power framework, the edge utilized is of steel. The determinations:

- Voltage 200-300V
- Power 4-15 kw
- Limit 80-800



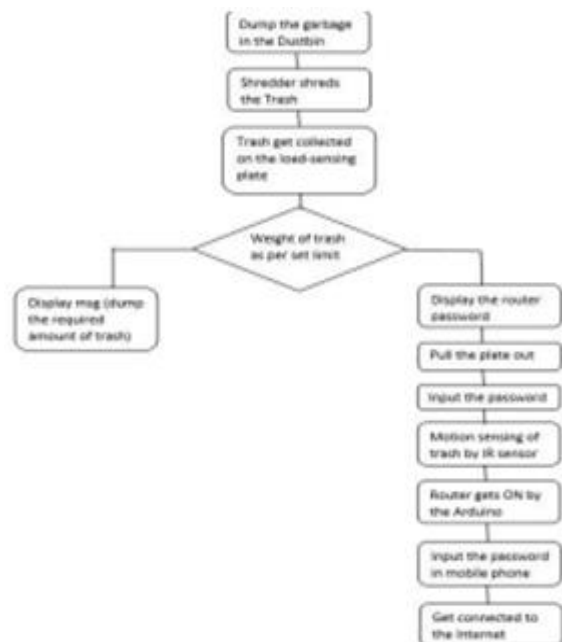
Fig.9: Mechanical Shredder.

11. Load sensing plate

The heap detecting plate is an explicitly planned plate concurring to the dustbin dimensions.it can be made of plastic wood metal it is utilized to gather the waste unloaded into the canister and as the load sensor is appended to its base it estimates the heaviness of the rubbish unloaded in. It consists of openings with the goal that the sand soil mud streams down through this openings and their weight isn't considered likewise the openings lessens the general load of the plate.it is introduced at the 1/4 range from the highest point of the dustbin. The heap detecting plate is an explicitly planned plate concurring to the dustbin dimensions.it can be made of plastic wood metal it is utilized to gather the waste unloaded into the canister and as the load sensor is appended to its base it estimates the heaviness of the rubbish unloaded in. It consists of openings with the goal that the sand soil mud streams down through this openings and their weight isn't considered likewise the openings lessens the general load of the plate.it is introduced at the 1/4 range from the highest point of the dustbin.



VLMETHODOLOGY



VII. ADVANTAGES

The proposed arrangement enjoys many benefits, it is additionally apt enough to be carried out in each road of a creating country. the benefits lie in its simple and significant working. This won't just further develop the roads we live in, yet additionally give an asphalt to better working framework.

- Productive and compelling Functioning.
- Cleaner Environs
- Better medical problems.
- Contamination free and smelling free environs

Brilliant urban areas

- Innovation advancement
- Vacation spot.

When carried out, this strategy would be not difficult to chip away at. The trash will be unloaded into the canisters consequently decreasing the wellbeing dangers forced by the waste present in general.

VIII. FUTURE WORKS

The dampness sensor can be executed connected at the hip with different sensors and the compartments for isolating the dry and wet waste can be made which will address the issues connected with squander isolation.

CONCLUSION

Ill-advised removal and ill-advised maintenance of homegrown waste establish issues in general wellbeing and climate contamination along these lines this paper endeavors to give common sense arrangement towards dealing with the waste working together it with the utilization of IOT for example giving free web offices to a particular time once the junk is unloaded into the canister. the proposed framework will certainly help to beat every one of the significant issues connected with waste and keep the climate clean.

REFERENCES

- [1] P. Suresh, Vijay. Daniel, R.H. Aswathy, Dr. V. Parthasarathy, "A State-of-the-Art review on Internet of Things" International Conference on Science Engineering and Management Research (ICSEMR), IEEE, DOI: 10.1109/ICSEMR.2014.7043637 19 February 2015.
- [2] Parkash, Prabu V "IoT Based Waste Management for Smart City" International Journal of Innovative Research

- in Computer and Communication Engineering, Vol. 4, Issue 2, DOI: 10.15680/IJIRCCE.2016. 0402029, February 2016.
- [3] Evaluation on the Performance of Urban Domestic Sewage Treatment Plants in China - 2011 Dongmei Han; Guojun Song
- [4] Teemu Nuortioa, Jari Kyto"jokes, Harri Niskaa, Olli Bra"ysyb "Improved route planning and scheduling of waste collection and transport", Expert Systems with Applications 30 (2006) 223– 232, Elsevier
- [5] M. Arebey, M. Hannan, H. Basri, and H. Abdullah, "Solid waste monitoring and management using RFID, GIS and GSM", The IEEE Student Conference on Research and Development (SCORED), 16-18 November 2009, UPM Serdang, Malaysia, 2009
- [6] M. Hannan, M. Arebey, R. A. Begum, and H. Basri, "Radio Frequency Identification (RFID) and communication technologies for solid waste bin and truck monitoring system", Waste Management, Vol. 31, pp. 2406-2413, 2011.
- [7] S. Longhi, D. Marzioni, E. Alidori, G. Di Buo, M. Prist, M. Grisostomi, et al., "Solid Waste Management Architecture Using Wireless Sensor Network Technology", The 5th International Conference on New Technologies, Mobility and Security (NTMS), 7-10 May 2012, Istanbul, pp. 1-5, 2012. 147
- [8] Waikhom Reshmi, RamKumar Sundaram, M. Rajeev Kumar, "Sensor Unit for Waste Management: A Better Method,"